
HOMESTEAD

SERIES

Two Story, Ranch and Cape Cod Style Plans



Home Plans from 1000 to 2600 square feet

**Ritz-Craft**
Custom Building Simplified



HOMESTEAD

S E R I E S

Our Homestead Series is a collection of traditionally styled, “right-sized” house plans that embrace the solid and practical needs of hard working American families—those who want to build an efficient and value-designed home to meet both their present needs and long term expectations.

Homestead plans are designed to be built economically and within your budget considerations while retaining high standards for energy efficiency and material quality. Your new home will include quality cabinetry, interior trim, windows, exterior doors and siding for low-maintenance, reliable performance and lasting value.

Thank you for considering a Homestead Series home by Ritz-Craft. We look forward to making your new home the next and most important home we build.





Optional **Easy Living Kitchen I (ELK 1)** in Easy Street Ranch. Photo shows optional soffit over the cabinets and drywall ceiling beams with crown molding. The ELK 1 kitchen is standard with a flush height island bar—the raised height island bar is available as an option. *Appliances optional.*



Optional **Easy Living Kitchen II (ELK 2)** in Easy Street Ranch. Photo shows upgrade countertop edging on range side, optional tile backsplash and upgrade island cabinet color. *Appliances optional.*

TWO STORY

OPTIMA
TWO STORY

1750-1920 sq. ft.

• 3 BRs • 2½ Baths

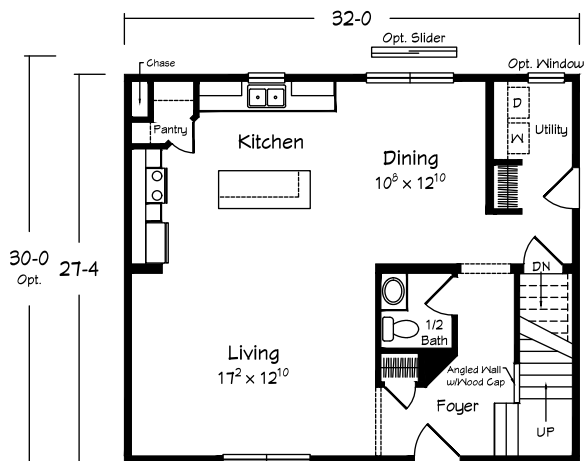
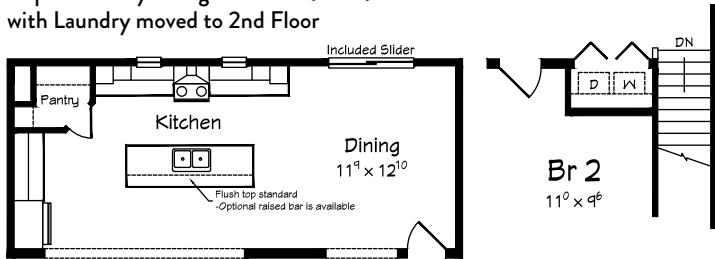


Scan for
interior views

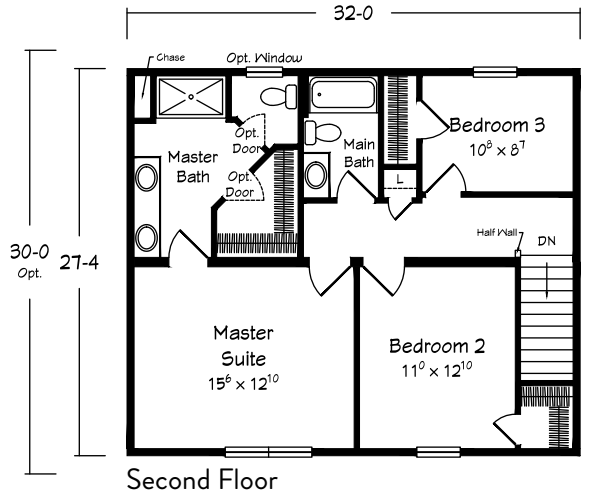
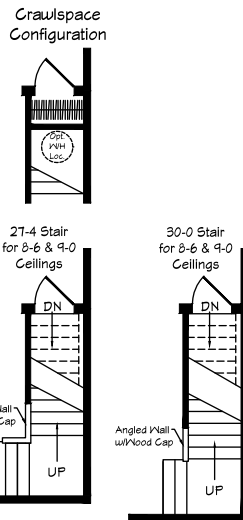


Shown with site built porch and garage.

*Optional Easy Living Kitchen 1 (ELK1)
with Laundry moved to 2nd Floor

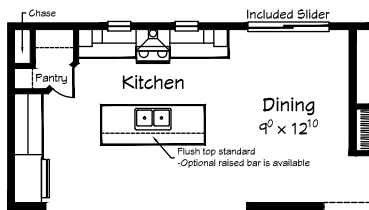


First Floor

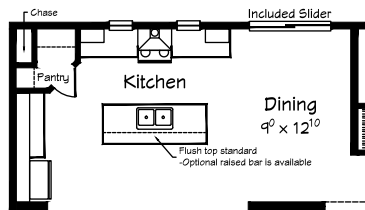


Second Floor

*Optional Easy Living Kitchen 1 (ELK1)



*Optional Easy Living Kitchen 2 (ELK2)



* Optional Easy Living Kitchen can be ordered as "ELK I" or "ELK II"– refer to photos on Page 1 of this brochure for cabinetry and window differences. Review your home's final plan prints for cabinet/window call-outs and adjusted room dimensions with these options.

Total "sq. ft." does not include garage or porch square footage.

TWO STORY



Shown with site built porch.

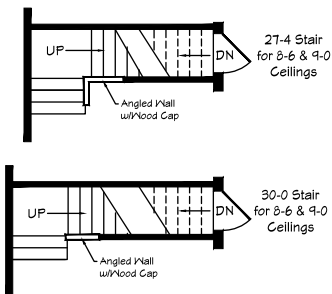
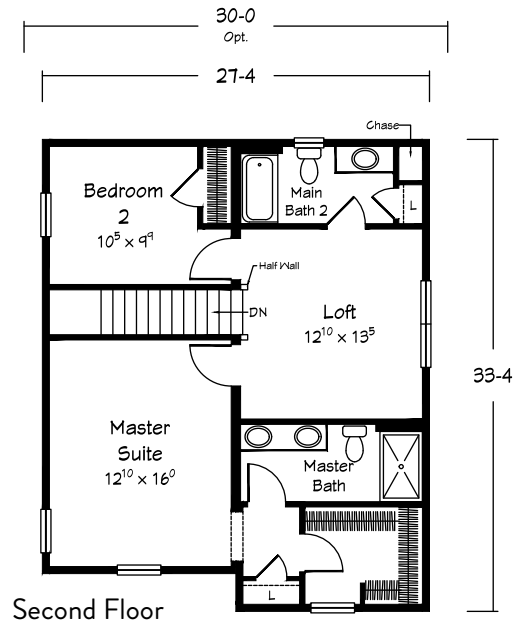
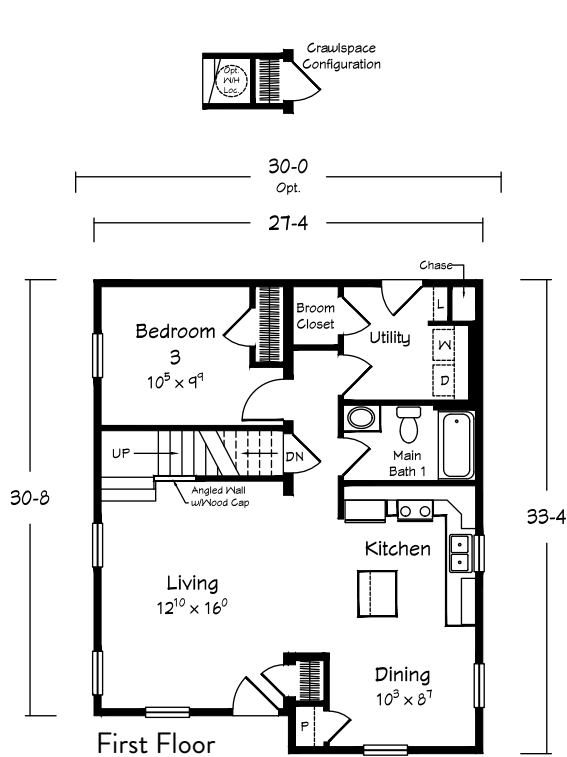


Scan for interior views

EDGEMOORE II TWO STORY

1750 to 1920sq. ft.

- 3 BRs • 3 Baths
- Loft Room



Total "sq. ft." does not include garage or porch square footage.

TWO STORY

FAIRFAX TWO STORY

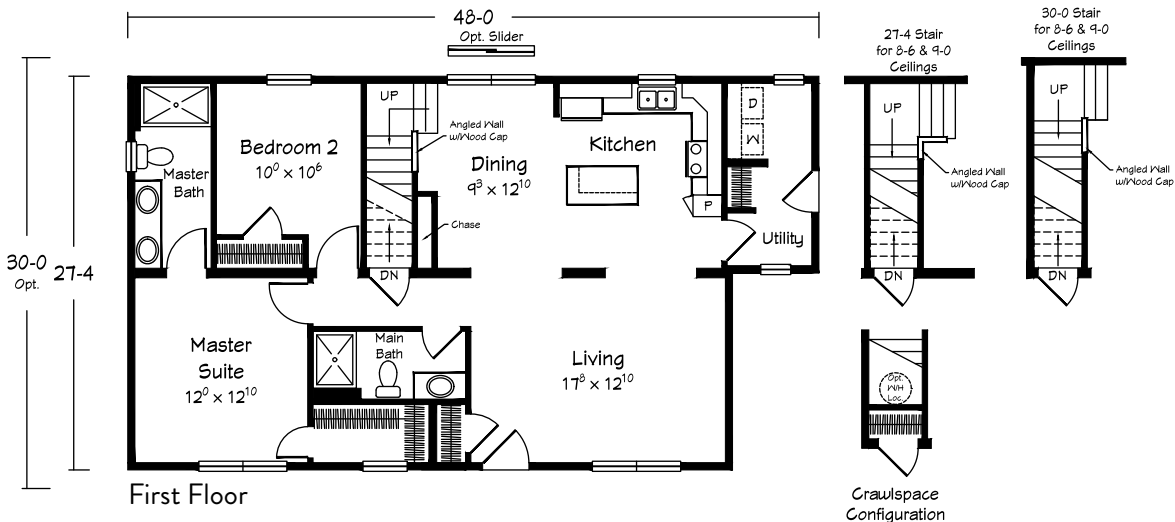
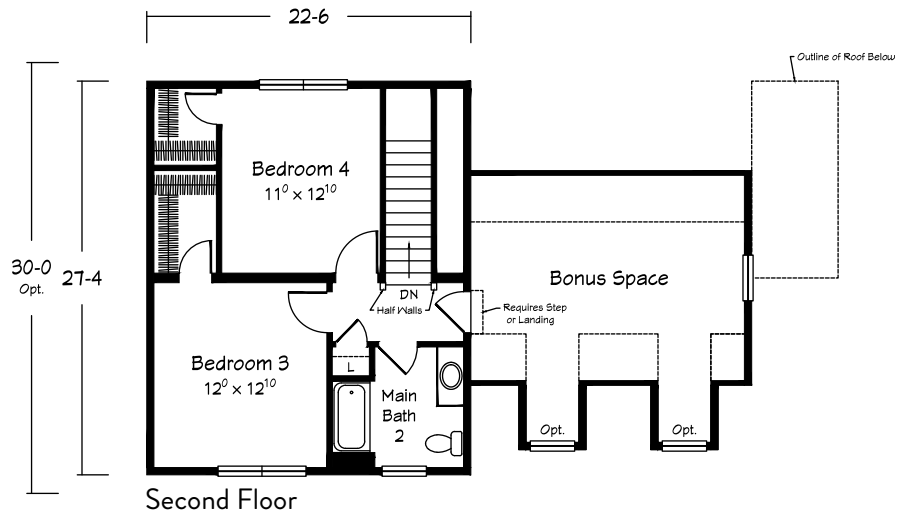
1754 to 1922 sq. ft.

- 4 BRs • 3 Baths
- Bonus Space



Shown with site built porch.

Scan for
interior views



Total "sq. ft." does not include garage or porch square footage.

TWO STORY



Shown with site built porch.

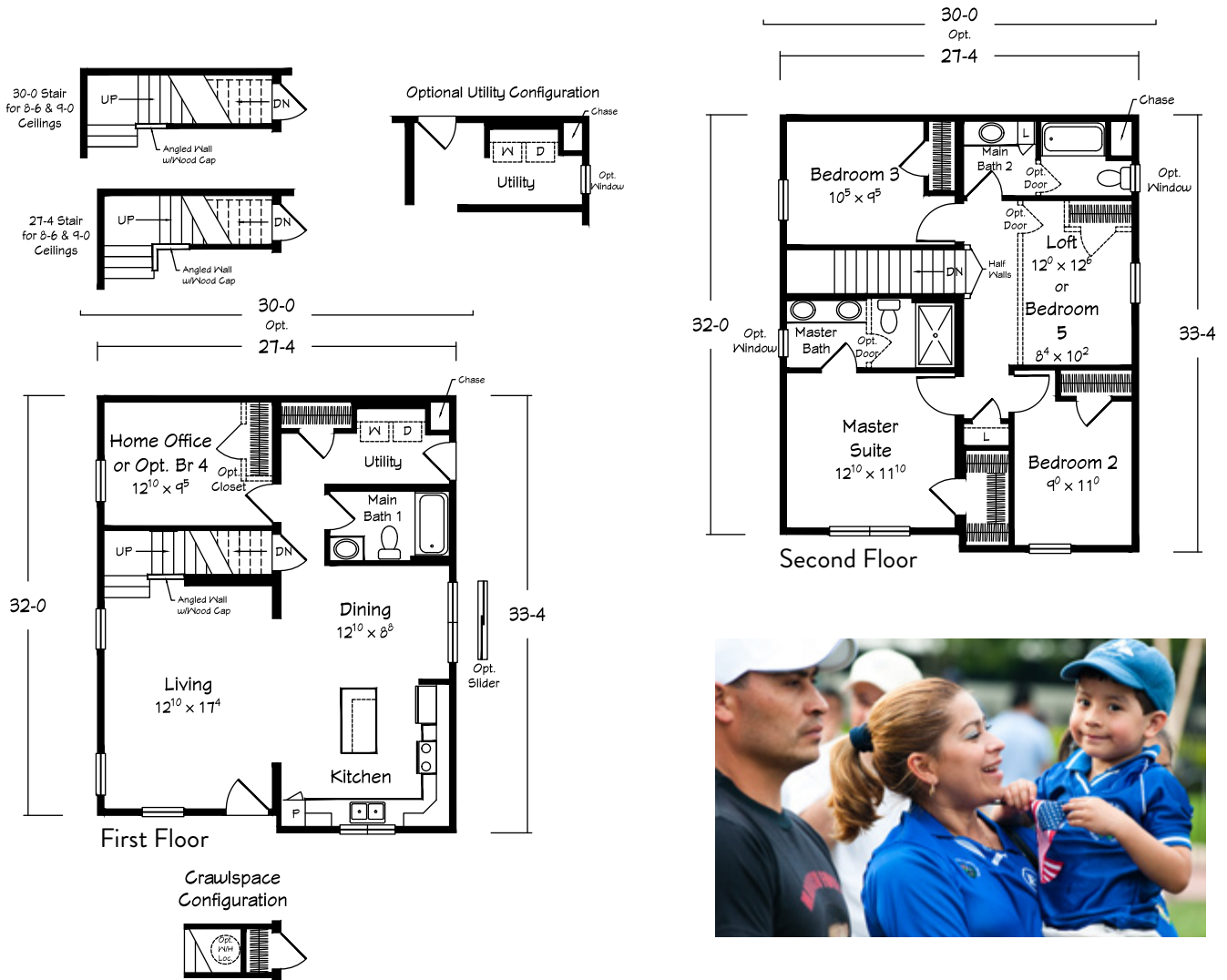
ANSON II TWO STORY

1786 to 1960 sq. ft.

- 3-4 BRs • 3 Baths
- Loft or 5th BR



Scan for
interior views



Total "sq. ft." does not include garage or porch square footage.

TWO STORY



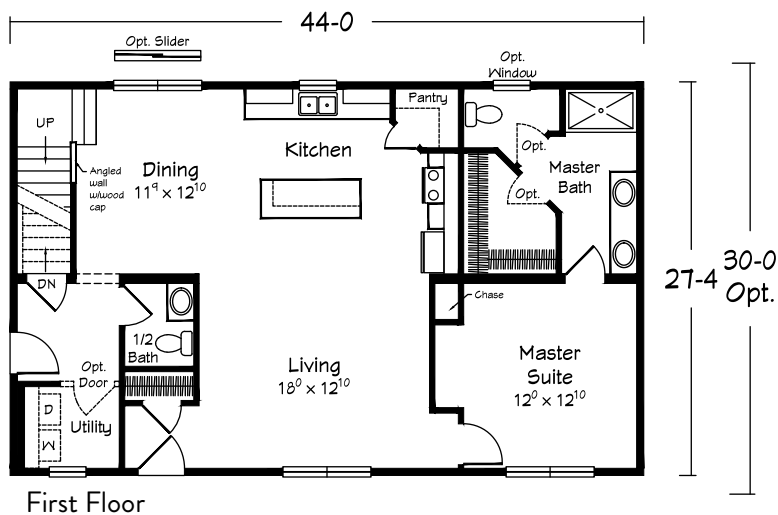
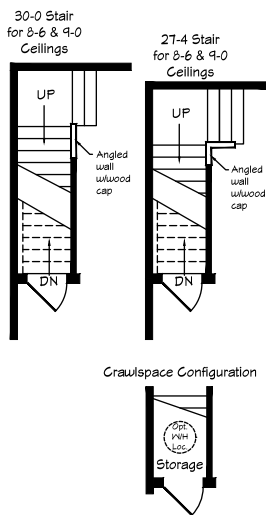
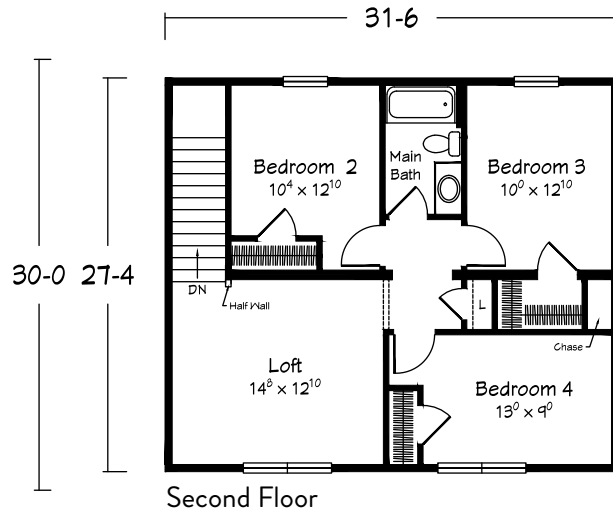
Scan for interior views

Shown with site built porch and garage.

OGDEN II
TWO STORY

2064 to 2265 sq. ft.

- 4 BRs • 2½ Baths
- Loft Room



Total "sq. ft." does not include garage or porch square footage.

TWO STORY



Shown with site built porch and garage.

Scan for interior views



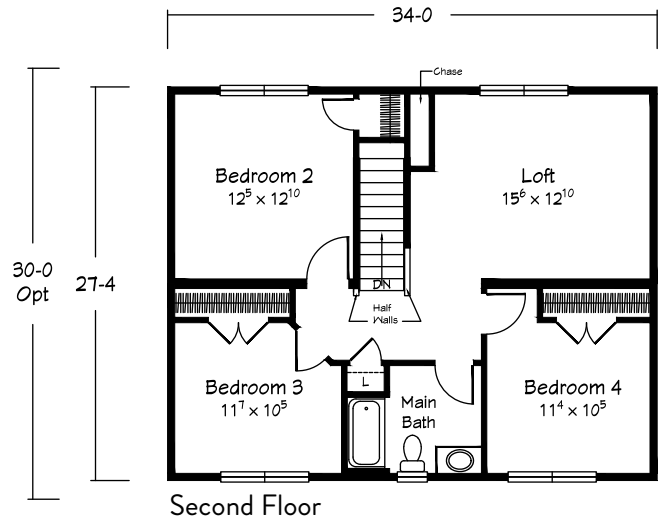
ORCHARD

TWO STORY

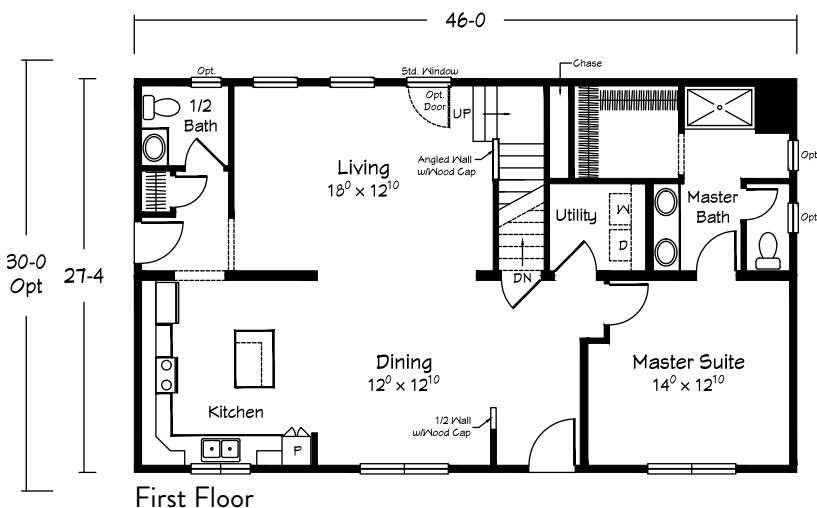
2187 to 2400 sq. ft.

- 4 BRs • 2½ Baths
- Loft Room

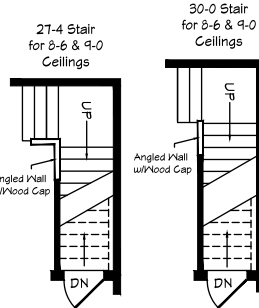
Crawl Space Configuration



Second Floor



First Floor



Total "sq. ft." does not include garage or porch square footage.

TWO STORY



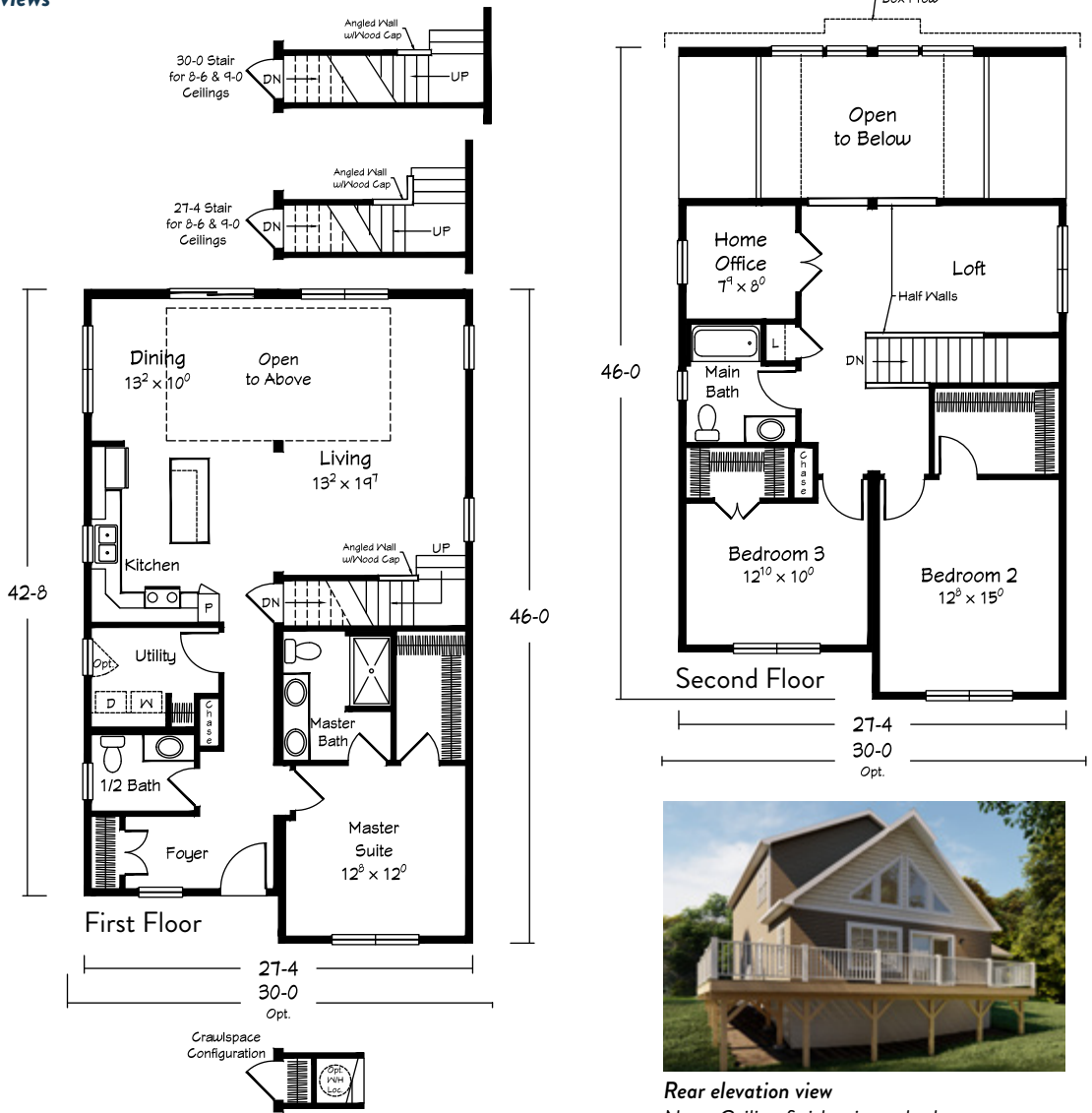
Scan for interior views

Shown with site built porch and garage.

FERNDALE
TWO STORY

2132 to 2333 sq.ft.

- 3 BRs • 2½ Baths
- Loft Room
- Home Office



Rear elevation view
Note: Ceiling finishes in vaulted area to be completed on site by builder.

Total "sq. ft." does not include garage or porch square footage.

TWO STORY



Shown with site built porch and garage.

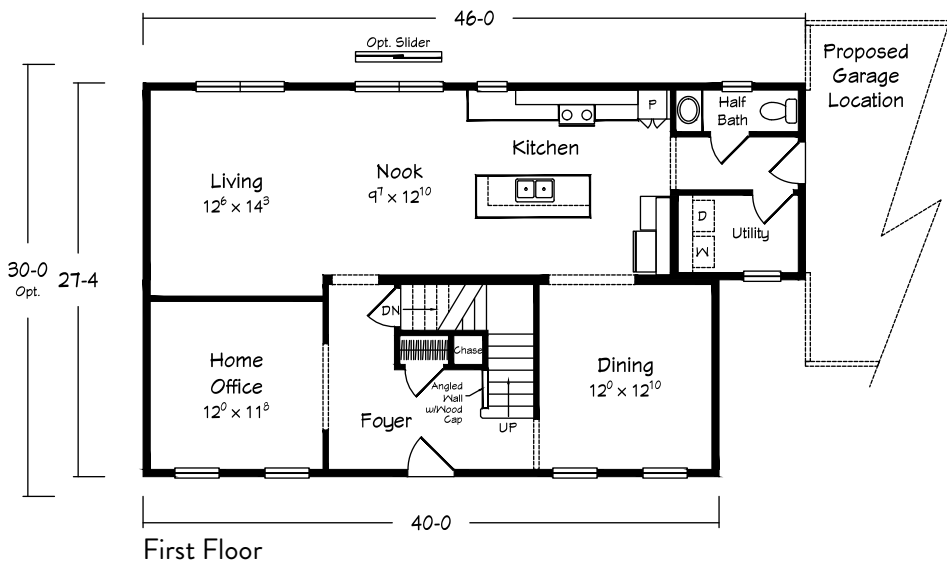
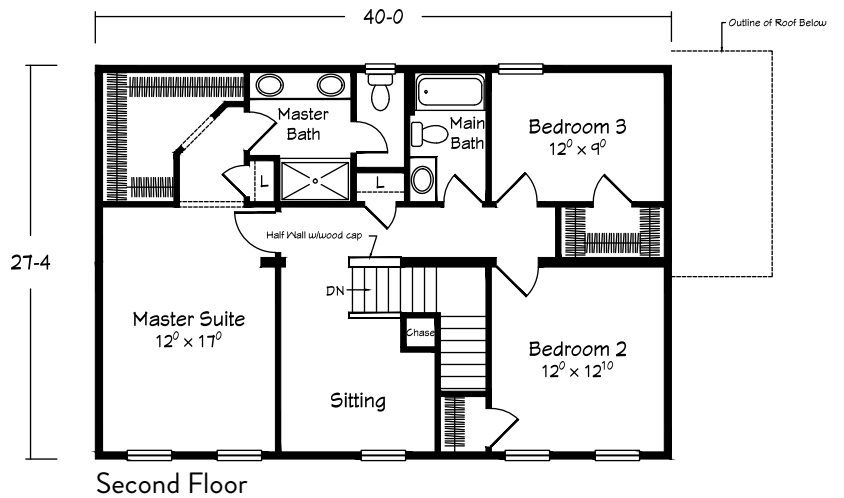
Scan for interior views



PLYMOUTH TWO STORY

2269 to 2490 sq. ft.

- 3 BRs • 2½ Baths
- Home Office
- Sitting Room



Total "sq. ft." does not include garage or porch square footage.

EASTWOOD CAPE COD

27-4 Plan: 911 plus 507 sq. ft. avail. – 1418 sq. ft.

30-0 Plan: 1000 plus 507 sq. ft. avail. – 1507 sq. ft.

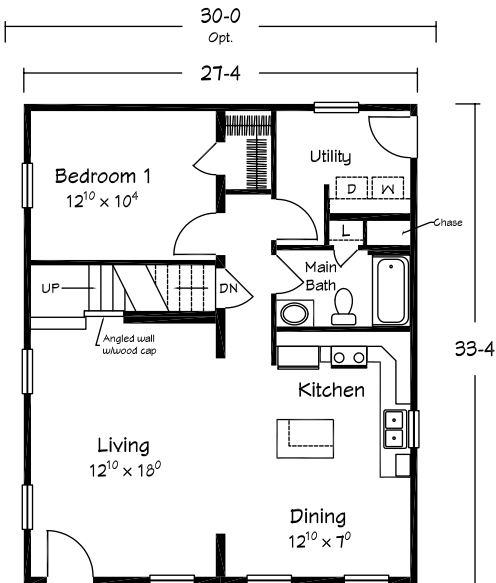
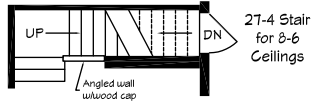
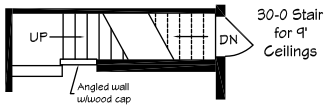
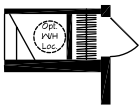
• 1-3 BRs • 1-2 Baths



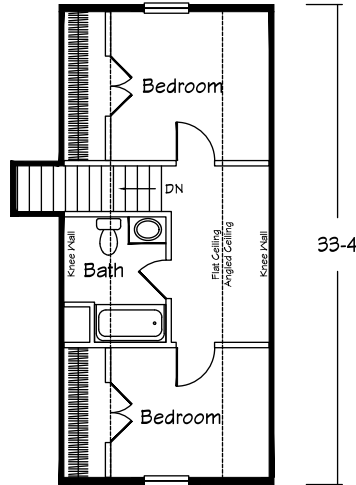
Scan for
interior views

Shown with site built porch.

Crawlspace
Configuration



First Floor

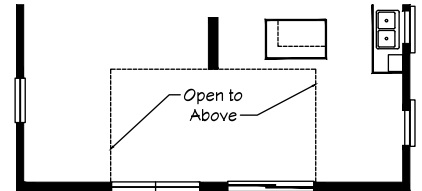


*Proposed Upper Level
507 sq. ft.

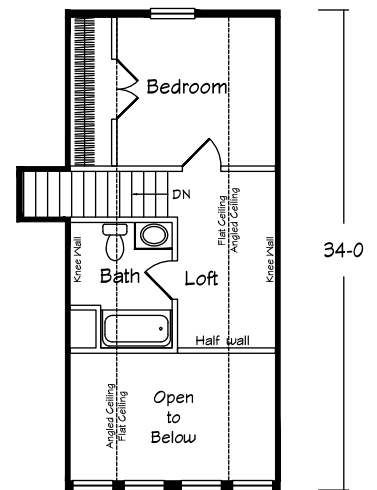


Optional "Chalet" front elevation
shown with site built deck.

Note: Ceiling finishes in vaulted area
to be completed on site by builder.



Eastwood "Chalet"
Gable End



*Proposed Upper Level
340 sq. ft.

* Please note that the upper-level area is designed for economical completion on-site. Optional dormer square footage is not included in upper level total shown. Higher snow load regions may require change to upper level space. Refer to final blueprints for dimensions. Refer to Ritz-Craft's print package and specifications for included materials and discuss all aspects of completion with your selected homebuilder.

Total "sq. ft." does not include garage or porch square footage.

CAPE



Shown with site built porch and garage.

Scan for
interior views

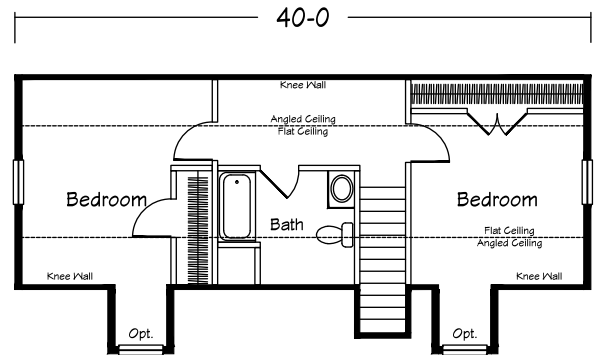


ORION II CAPE COD

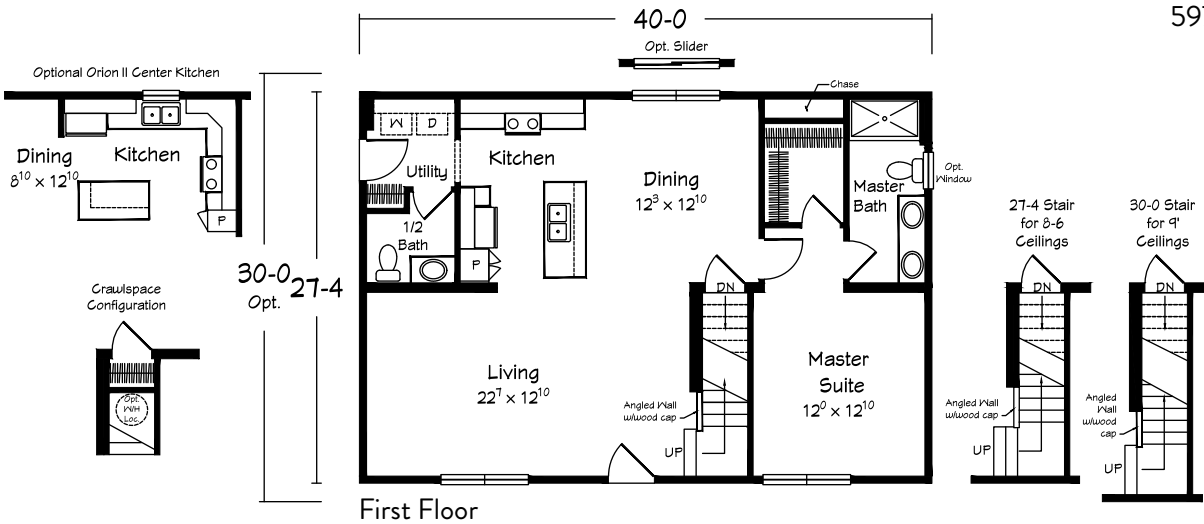
27-4 Plan: 1093 plus 597 sq. ft. avail. — 1690 sq. ft.

30-0 Plan: 1200 plus 597 sq. ft. avail. — 1197 sq. ft.

- 1-3 BRs • 1½-2½ Baths



*Proposed Upper Level
597 sq. ft.



* Please note that the upper-level area is designed for economical completion on-site. Optional dormer square footage is not included in upper level total shown. Higher snow load regions may require change to upper level space. Refer to final blueprints for dimensions. Refer to Ritz-Craft's print package and specifications for included materials and discuss all aspects of completion with your selected homebuilder.

Total "sq. ft." does not include garage or porch square footage.

CAPE



Scan for interior views

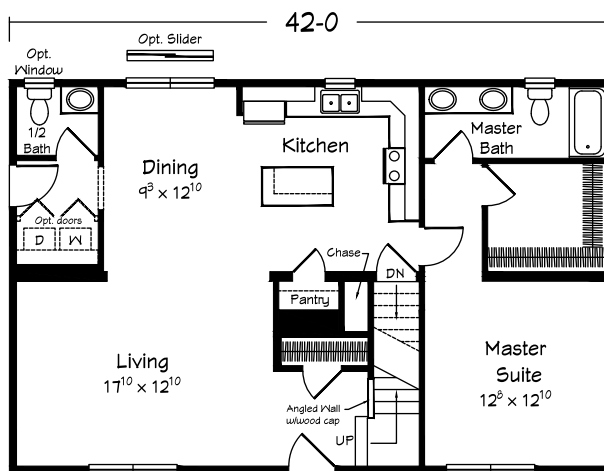
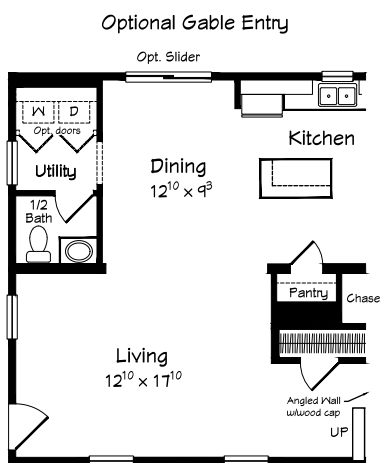
Shown with site built porch.

ANNANDALE II
CAPE COD

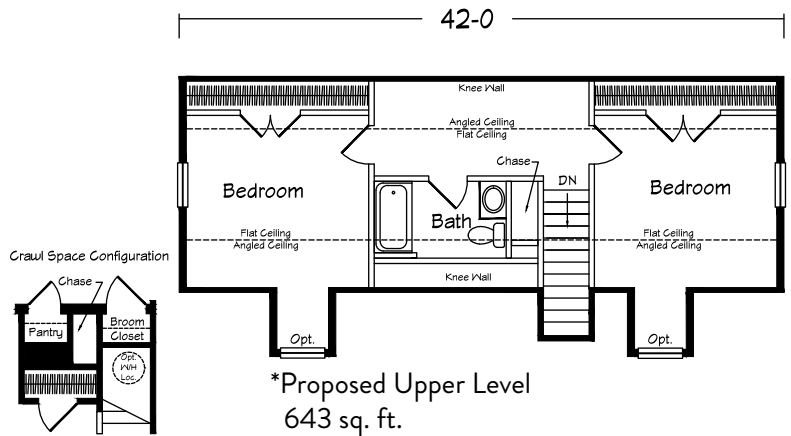
27-4 Plan: 1148 plus 643 sq. ft. avail. — 1791 sq. ft.

30-0 Plan: 1260 plus 643 sq. ft. avail. — 1903 sq. ft.

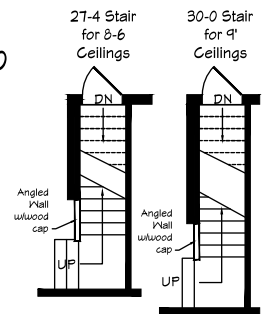
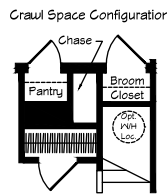
1-3 BRs • 1½-2½ Baths



First Floor



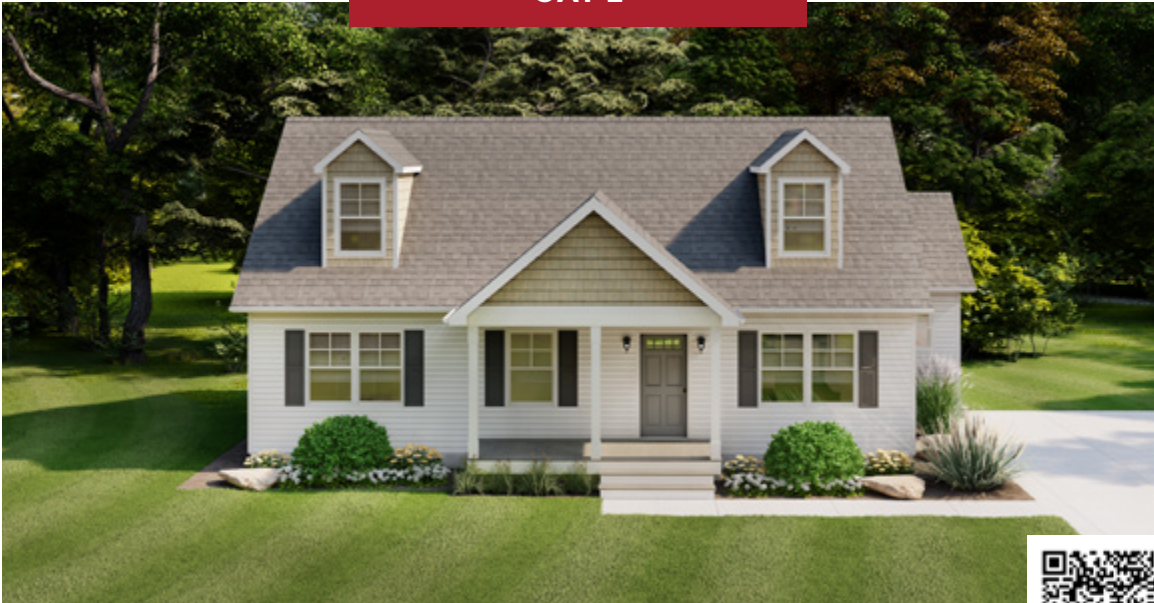
*Proposed Upper Level
643 sq. ft.



* Please note that the upper-level area is designed for economical completion on-site. Optional dormer square footage is not included in upper level total shown. Higher snow load regions may require change to upper level space. Refer to final blueprints for dimensions. Refer to Ritz-Craft's print package and specifications for included materials and discuss all aspects of completion with your selected homebuilder.

Total "sq. ft." does not include garage or porch square footage.

CAPE



Shown with site built porch.

Scan for
interior views

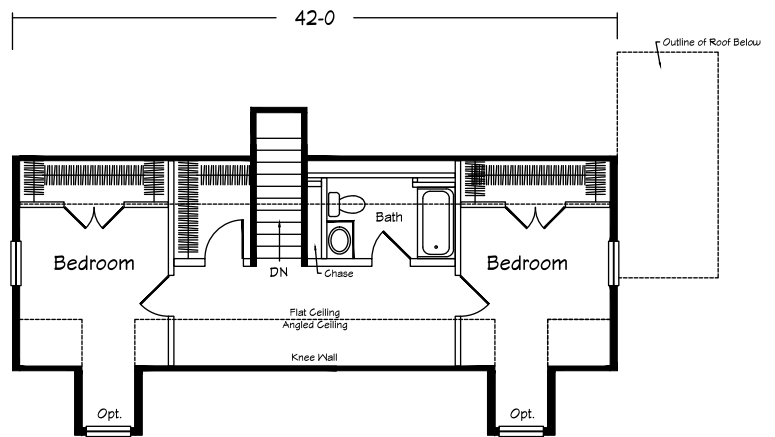


FAIRFAX II CAPE COD

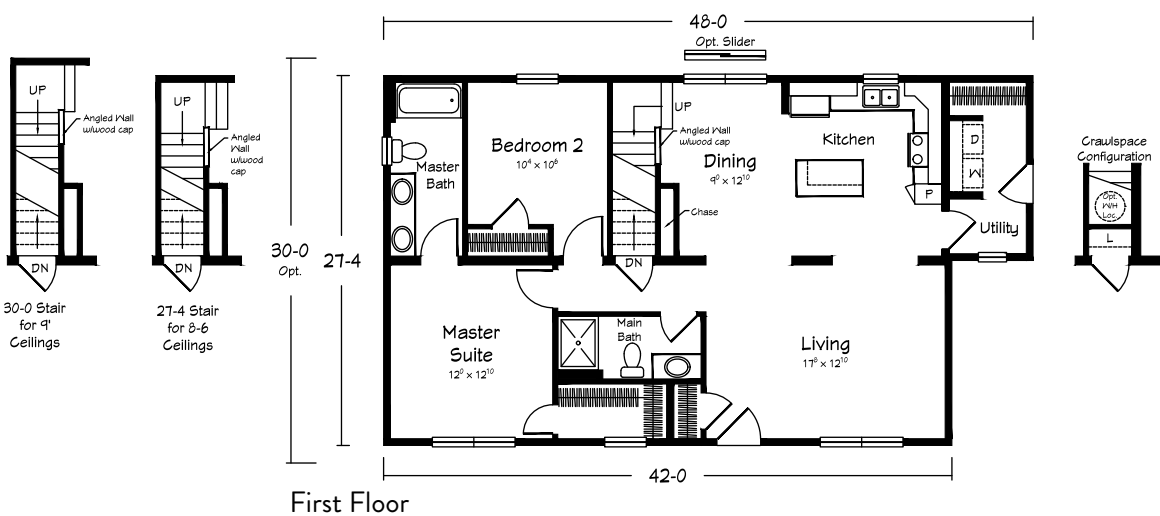
27-4 Plan: 1230 plus 643 sq. ft. avail. — 1873 sq. ft.

30-0 Plan: 1350 plus 643 sq. ft. avail. — 1993 sq. ft.

2-4 BRs • 2-3 Baths



*Proposed Upper Level
643 sq. ft.



First Floor

* Please note that the upper-level area is designed for economical completion on-site. Optional dormer square footage is not included in upper level total shown. Higher snow load regions may require change to upper level space. Refer to final blueprints for dimensions. Refer to Ritz-Craft's print package and specifications for included materials and discuss all aspects of completion with your selected homebuilder.

Total "sq. ft." does not include garage or porch square footage.

CAPE



Scan for
interior views

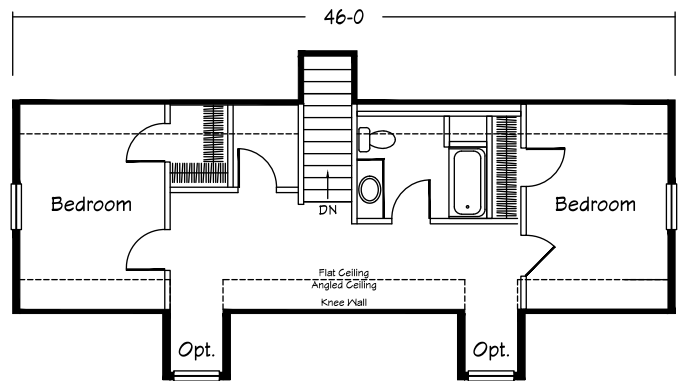
Shown with site built porch and garage.

OAK GROVE CAPE COD

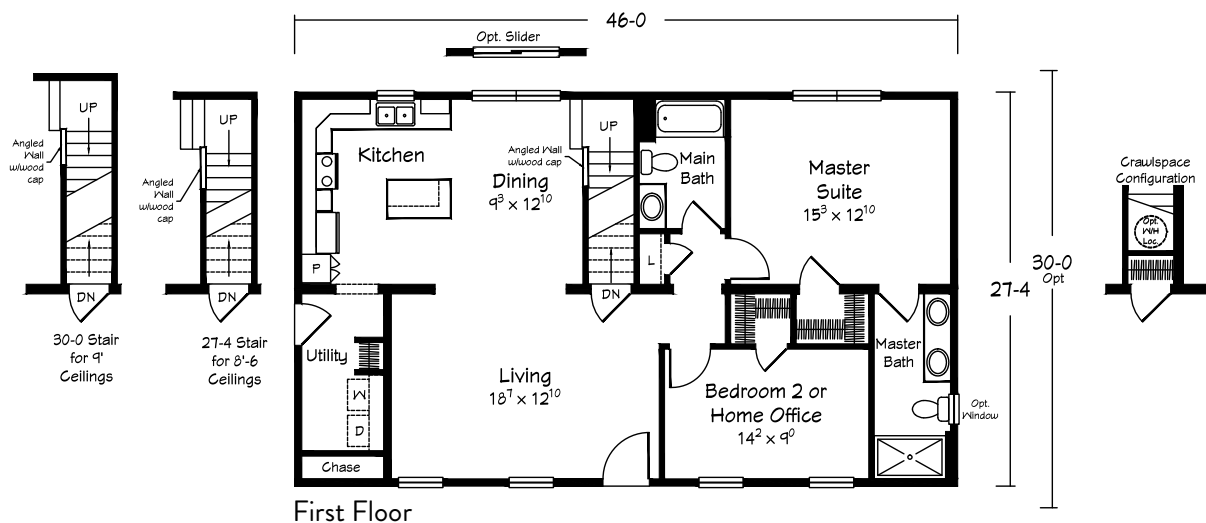
27-4 Plan: 1257 plus 698 sq. ft. avail. — 1955 sq. ft.

30-0 Plan: 1380 plus 698 sq. ft. avail. — 2078 sq. ft.

2-4 BRs • 2-3 Baths



*Proposed Upper Level
698 sq. ft.



First Floor

* Please note that the upper-level area is designed for economical completion on-site. Optional dormer square footage is not included in upper level total shown. Higher snow load regions may require change to upper level space. Refer to final blueprints for dimensions. Refer to Ritz-Craft's print package and specifications for included materials and discuss all aspects of completion with your selected homebuilder.

Total "sq. ft." does not include garage or porch square footage.

CAPE



Shown with site built porch.

Scan for
interior views

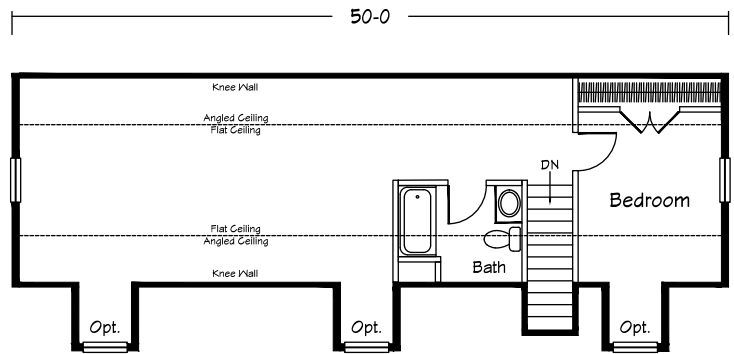


APPLETON II CAPE COD

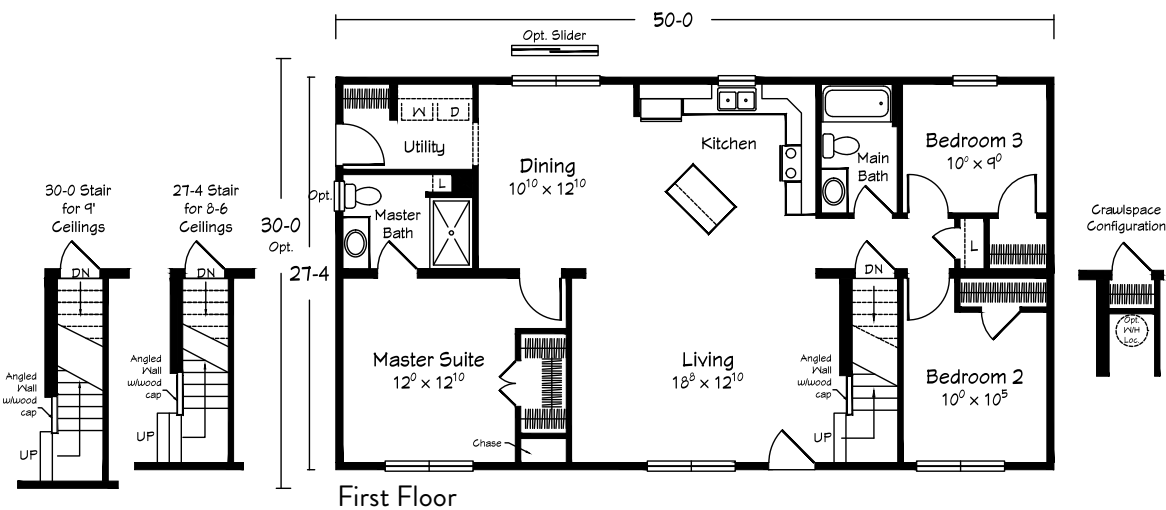
27-4 Plan: 1367 plus 746 sq. ft. avail. — 2113 sq. ft.

30-0 Plan: 1500 plus 746 sq. ft. avail. — 2246 sq. ft.

3-4 BRs • 2-3 Baths



*Proposed Upper Level
746 sq. ft.



First Floor

* Please note that the upper-level area is designed for economical completion on-site. Optional dormer square footage is not included in upper level total shown. Higher snow load regions may require change to upper level space. Refer to final blueprints for dimensions. Refer to Ritz-Craft's print package and specifications for included materials and discuss all aspects of completion with your selected homebuilder.

Total "sq. ft." does not include garage or porch square footage.

CAPE



Shown with site built porch and garage.

Scan for interior views

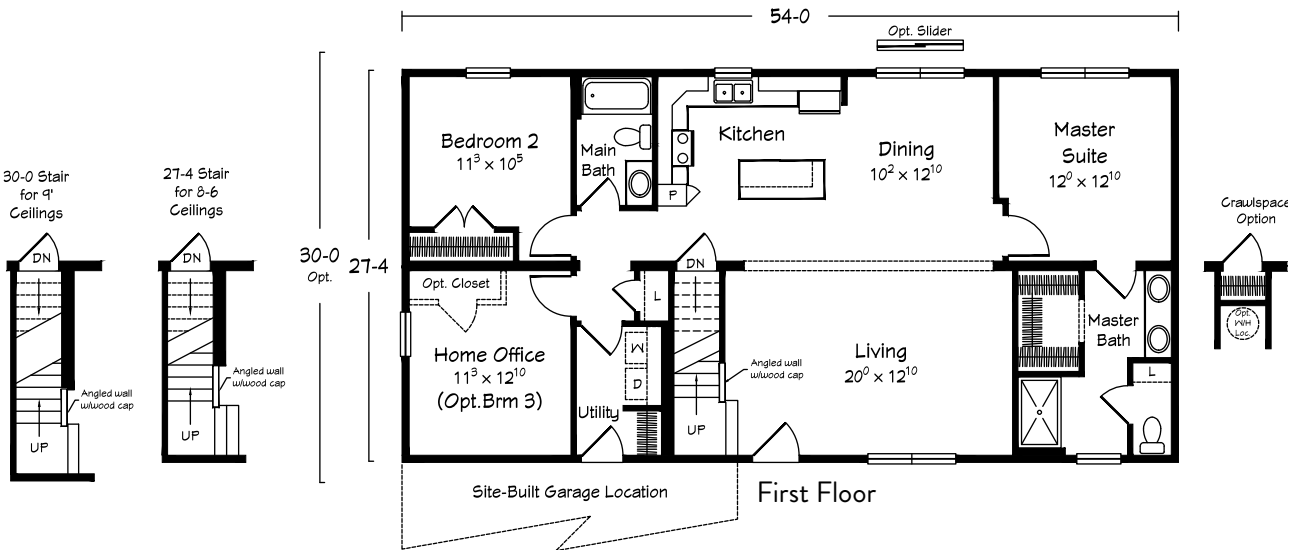
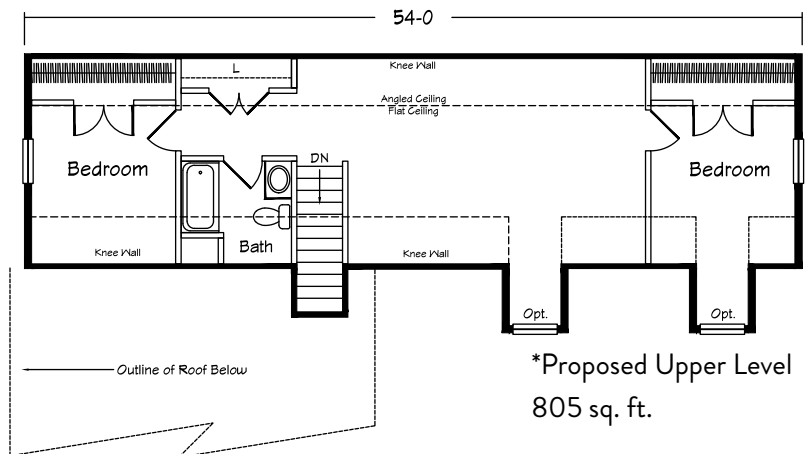


GREENWAY CAPE CAPE COD

27-4 Plan: 1476 plus 805 sq. ft. avail. — 2281 sq. ft.

30-0 Plan: 1620 plus 805 sq. ft. avail. — 2425 sq. ft.

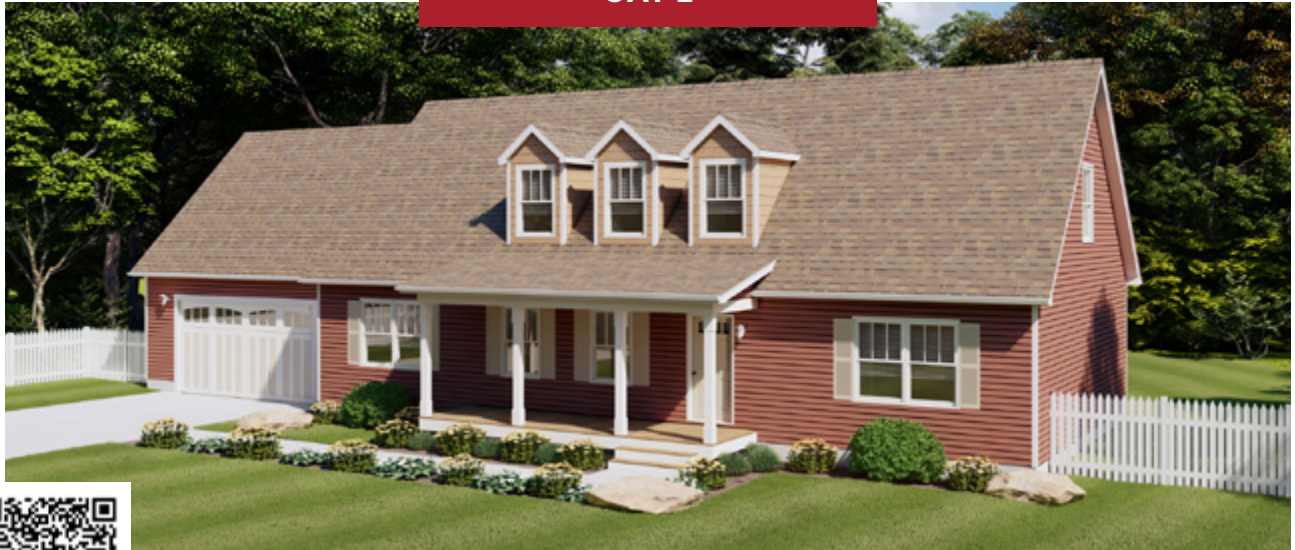
3-5 BRs • 2-3 Baths



* Please note that the upper-level area is designed for economical completion on-site. Optional dormer square footage is not included in upper level total shown. Higher snow load regions may require change to upper level space. Refer to final blueprints for dimensions. Refer to Ritz-Craft's print package and specifications for included materials and discuss all aspects of completion with your selected homebuilder.

Total "sq. ft." does not include garage or porch square footage.

CAPE



Scan for interior views

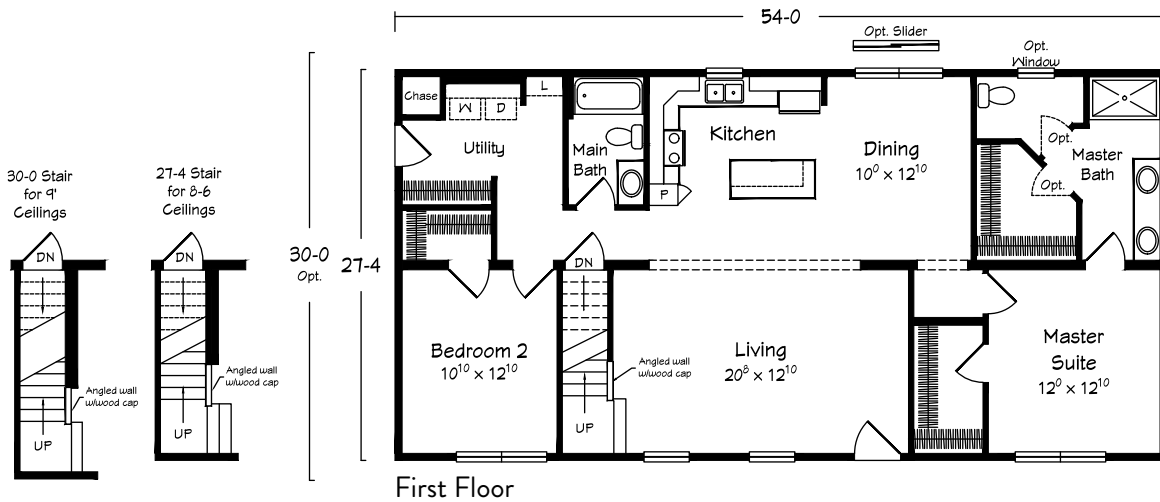
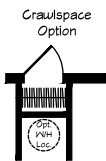
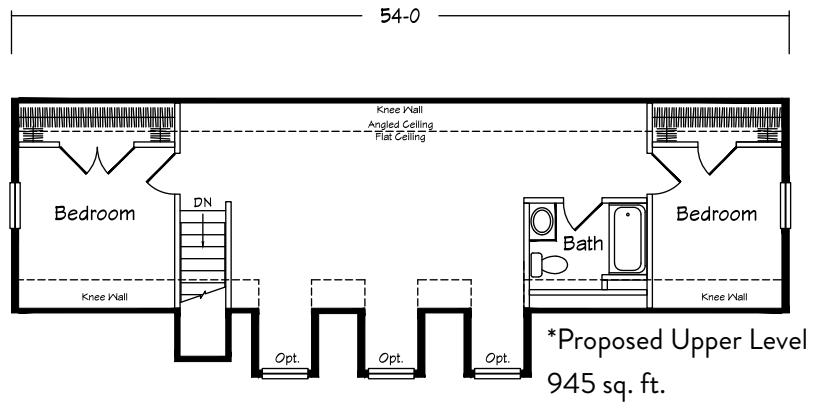
Shown with site built porch and garage.

AUDUBON CAPE COD

27-4 Plan: 1476 plus 945 sq. ft. avail. — 2421 sq. ft.

30-0 Plan: 1620 plus 945 sq. ft. avail. — 2565 sq. ft.

2-4 BRs • 2-3 Baths



* Please note that the upper-level area is designed for economical completion on-site. Optional dormer square footage is not included in upper level total shown. Higher snow load regions may require change to upper level space. Refer to final blueprints for dimensions. Refer to Ritz-Craft's print package and specifications for included materials and discuss all aspects of completion with your selected homebuilder.

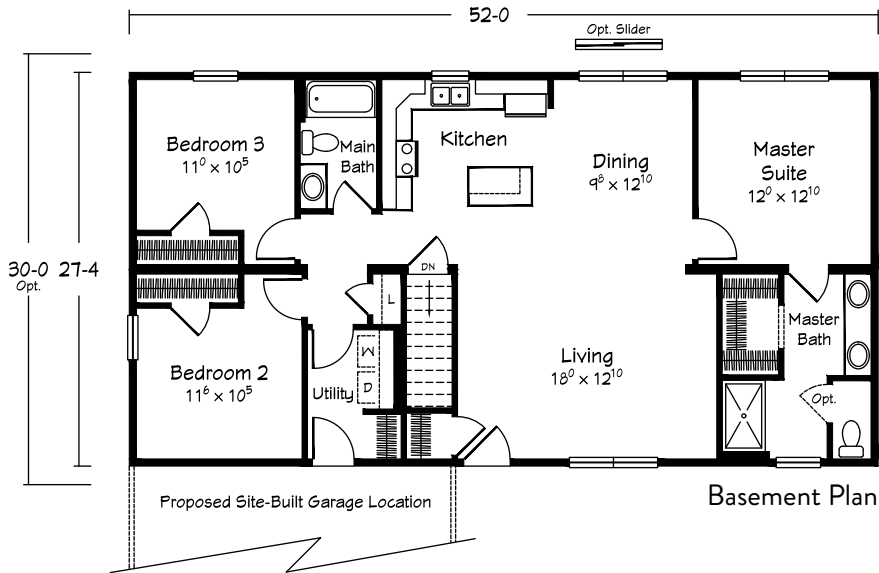
Total "sq. ft." does not include garage or porch square footage.

FRONT GARAGE RANCH PLAN



Shown with site built porch and garage.

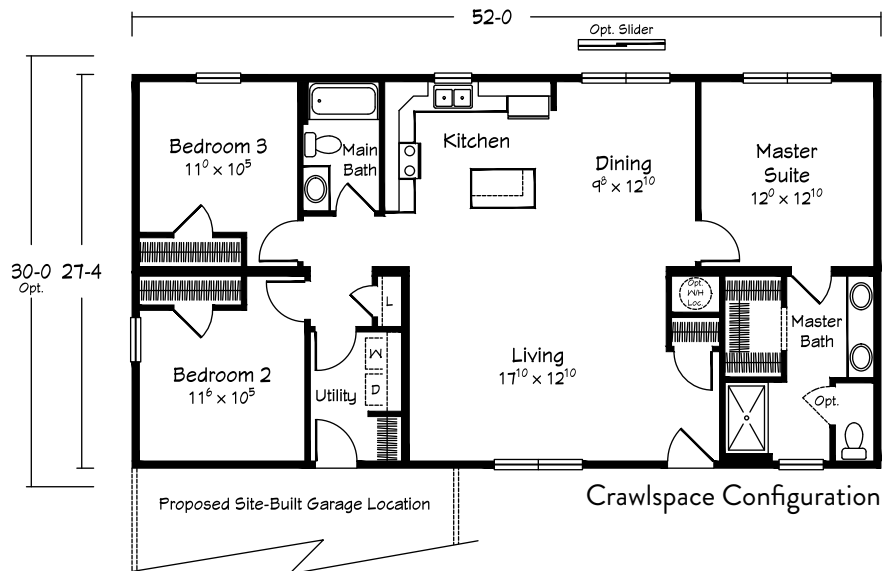
Scan for interior views



GREENFIELD II RANCH

1421-1560 sq. ft.

• 3 BRs • 2 Baths



Total "sq. ft." does not include garage or porch square footage.

FRONT GARAGE RANCH PLAN



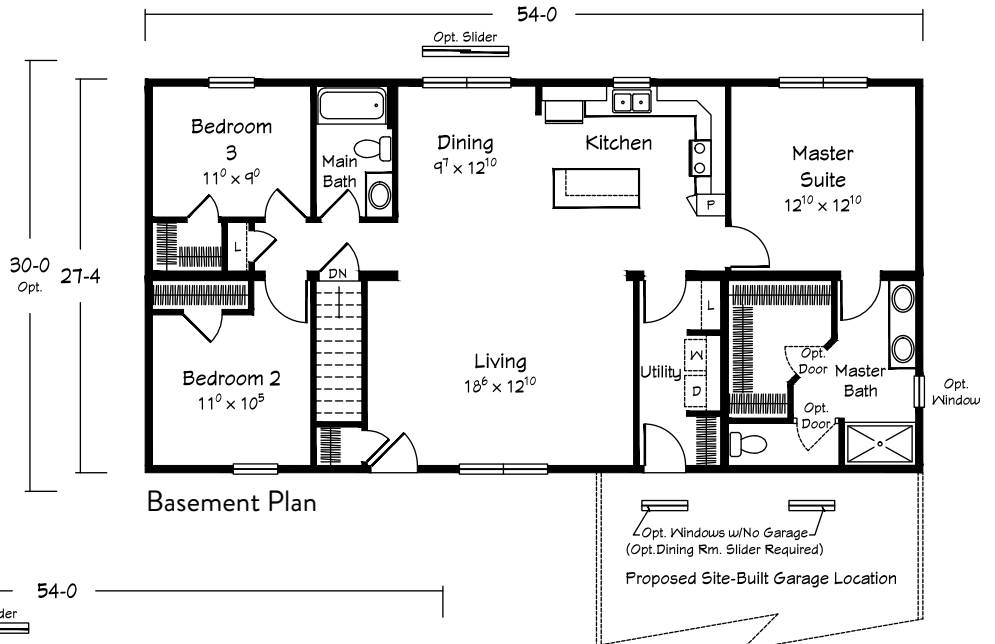
Scan for interior views

Shown with site built porch and garage.

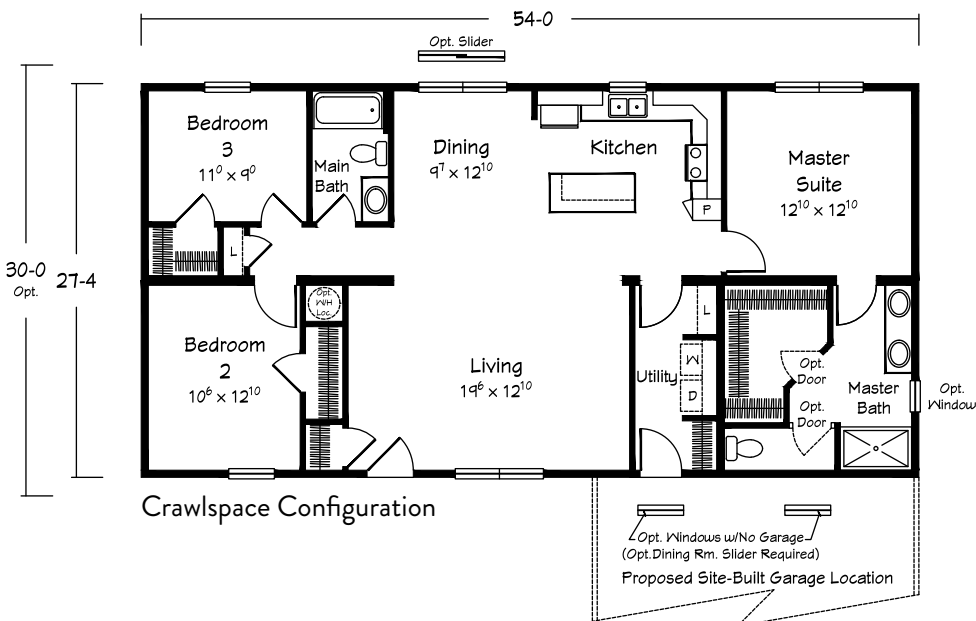
EDENTON RANCH

1476-1620 sq. ft.

• 3 BRs • 2 Baths



Basement Plan



Crawlspace Configuration



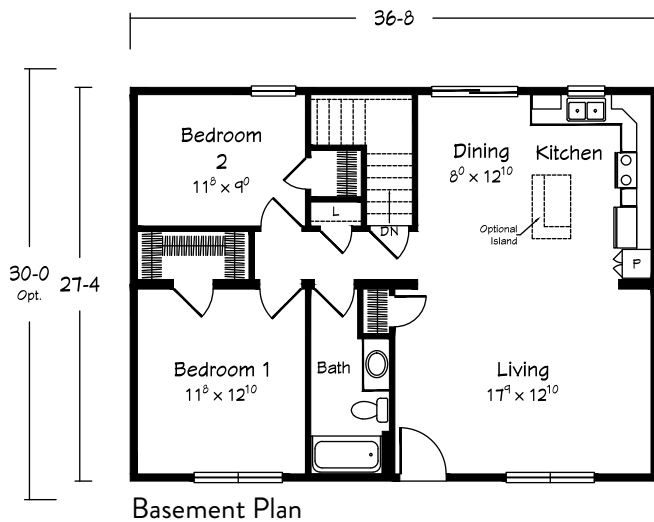
Total "sq. ft." does not include garage or porch square footage.

RANCH



Shown with site built porch.

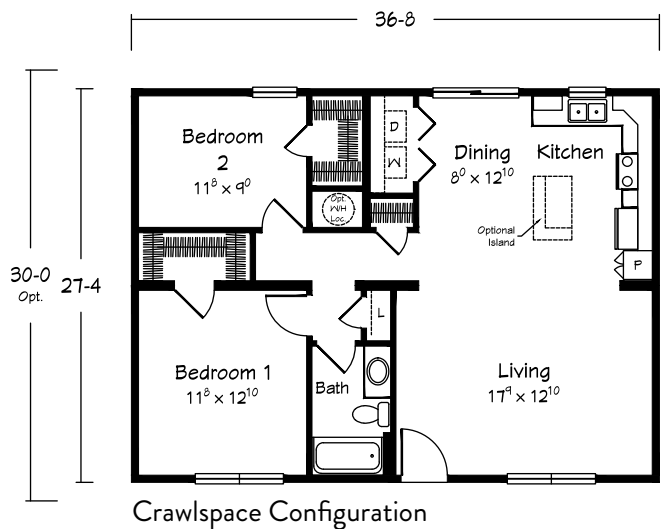
Scan for
interior views



HARWOOD RANCH

1002-1097 sq. ft.

• 2 BRs • 1 Bath



Total "sq. ft." does not include garage or porch square footage.

RANCH



Scan for interior views

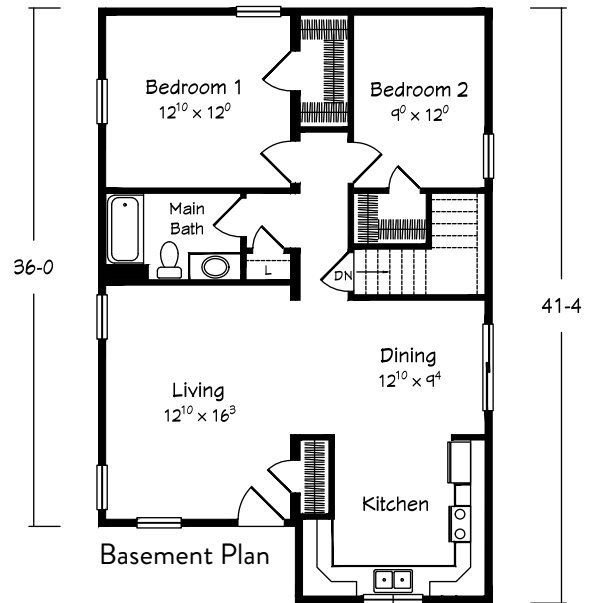
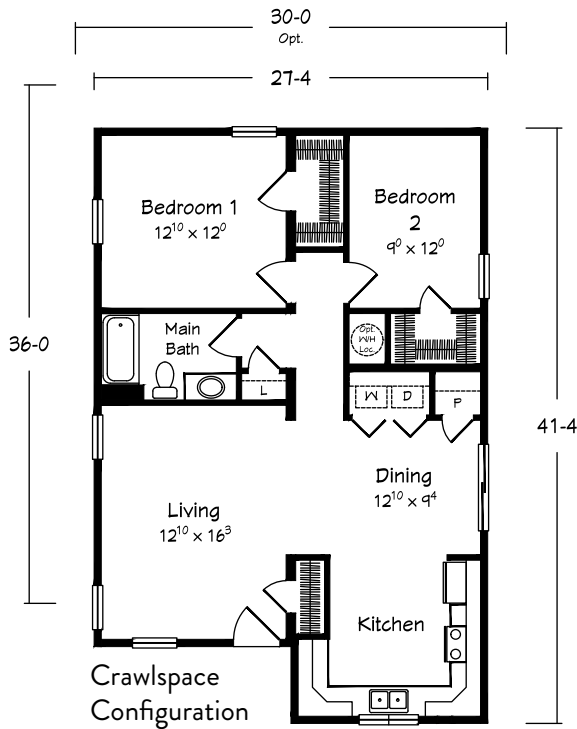
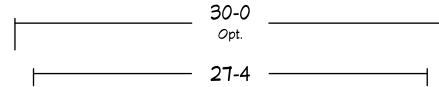
Shown with site built porch.

MALVERN RANCH

1057-1161 sq. ft.

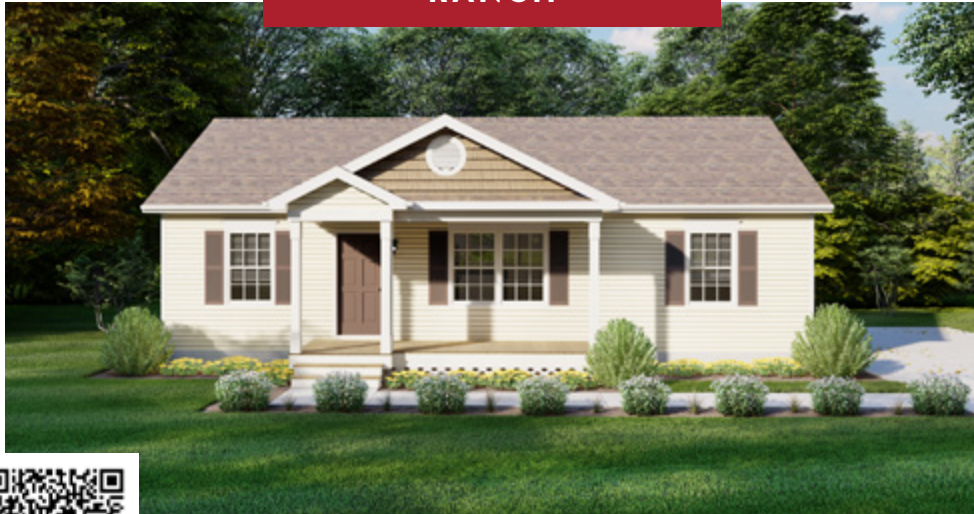
• 2 BRs • 1 Bath

Optional Stack W/D Location for Basement Plan



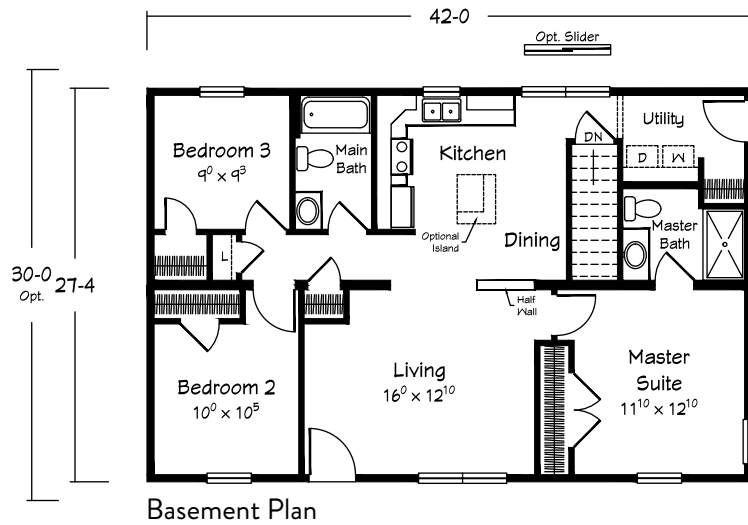
Total "sq. ft." does not include garage or porch square footage.

RANCH



Scan for
interior views

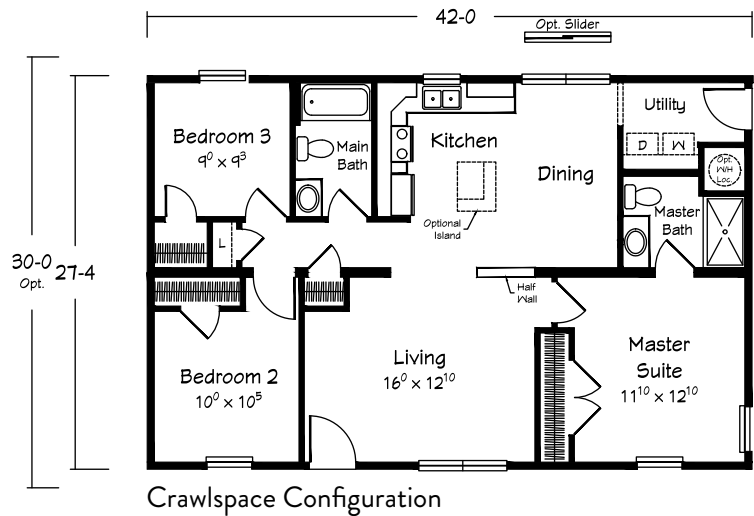
Shown with site built porch.



AVON RANCH

1148-1260 sq. ft.

• 3 BRs • 2 Baths



Total "sq. ft." does not include garage or porch square footage.

RANCH



Shown with site built porch.

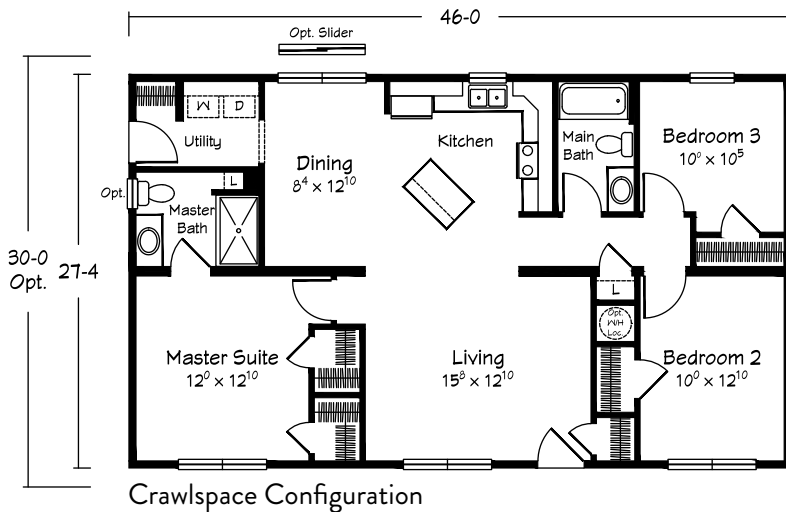
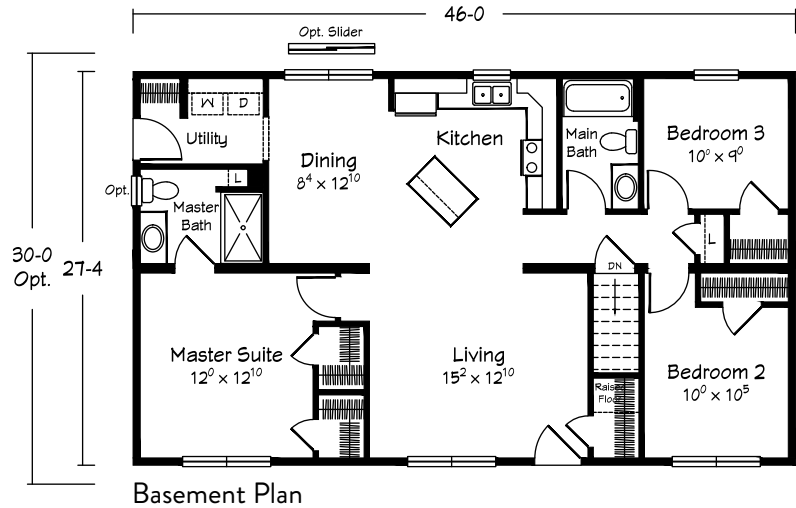
Scan for
interior views



GREENFIELD I RANCH

1257-1380 sq. ft.

- 3 BRs • 2 Baths



Total "sq. ft." does not include garage or porch square footage.

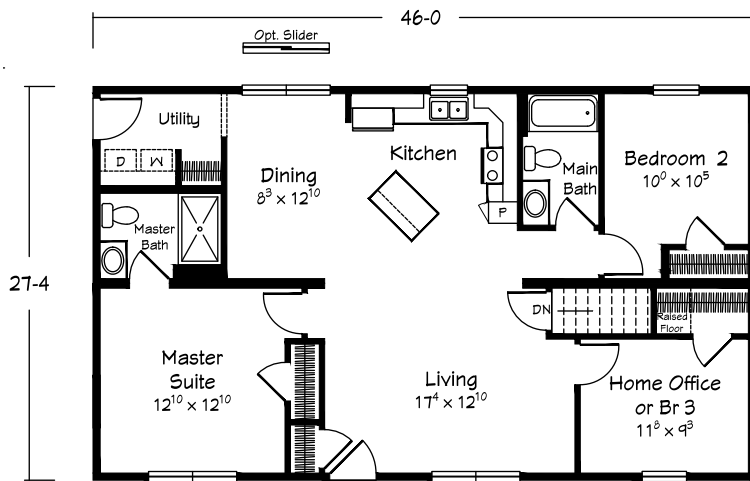
RANCH



Shown with site built porch.



Scan for
interior views

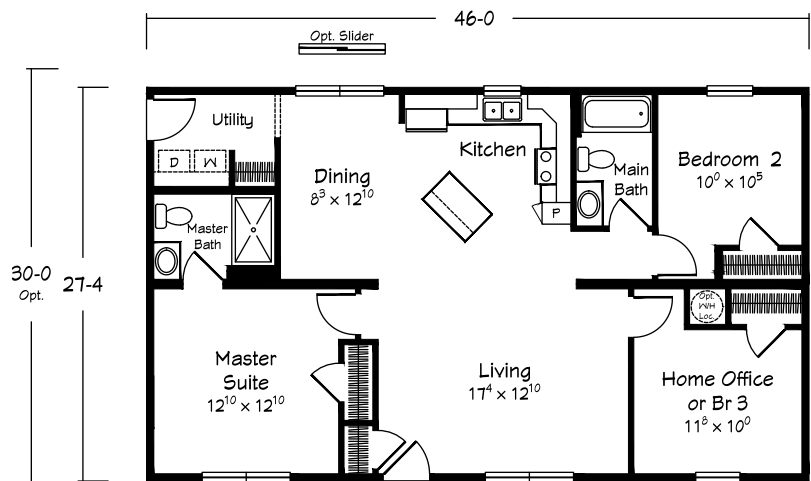


Basement Plan

ATWATER RANCH

1257-1380 sq. ft.

• 3 BRs • 2 Baths



Crawlspace Configuration

Total "sq. ft." does not include garage or porch square footage.

RANCH



Shown with site built porch.

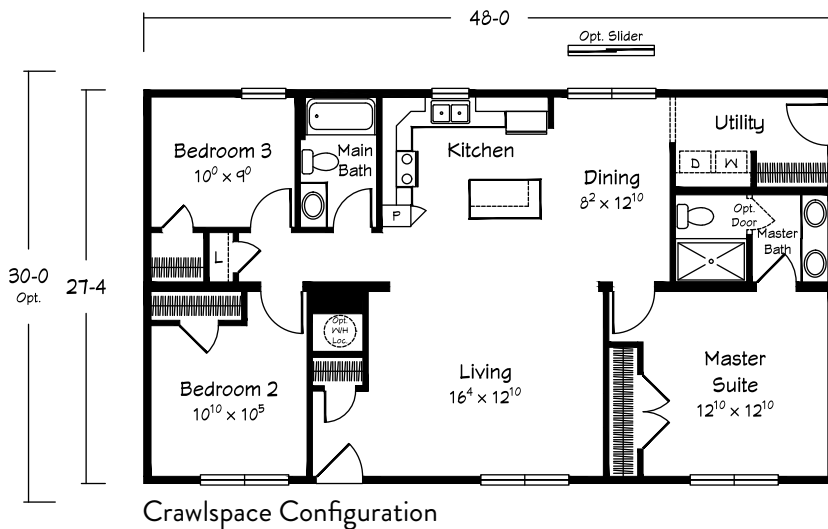
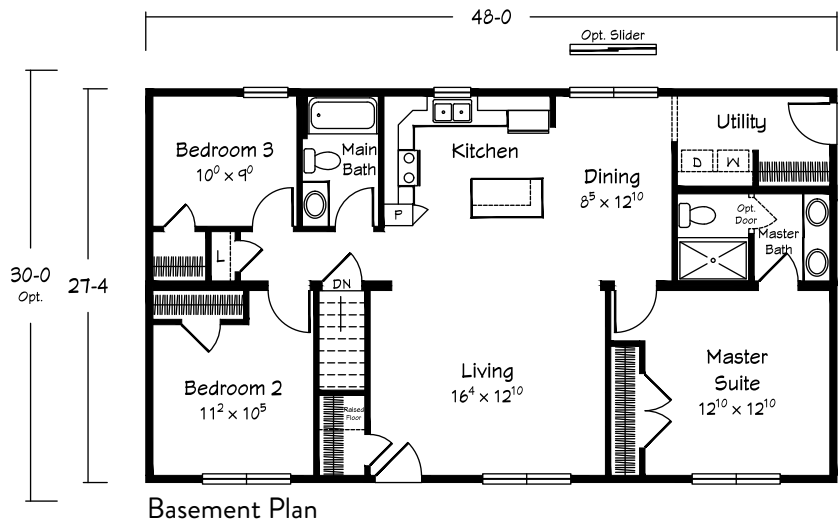
Scan for
interior views



AZALEA RANCH

1312-1440 sq. ft.

• 3 BRs • 2 Baths



Total "sq. ft." does not include garage or porch square footage.

RANCH



Shown with site built porch.

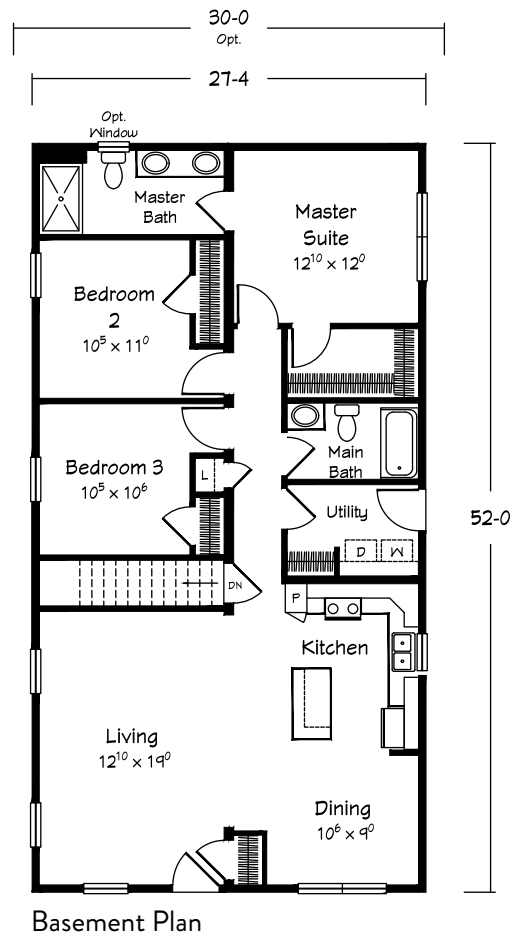
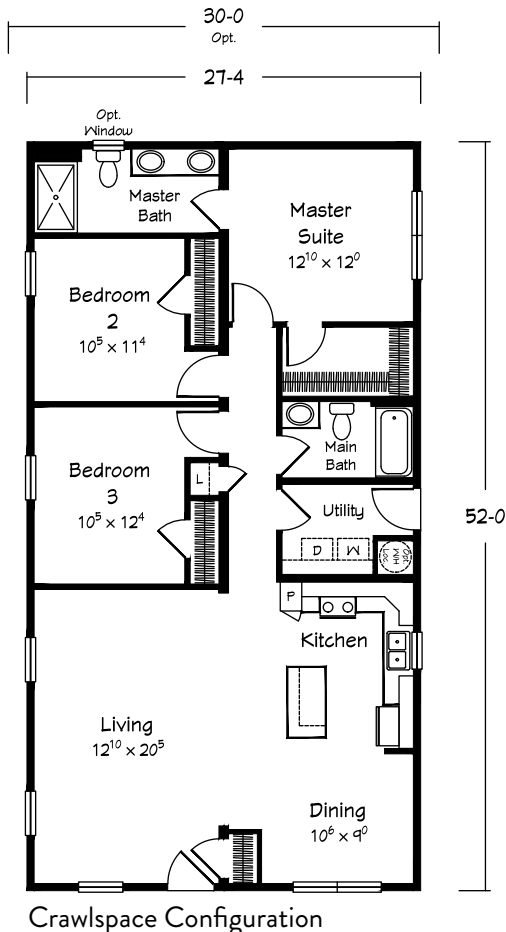
Scan for
interior views



ECKLEY RANCH

1421-1560 sq. ft.

• 3 BRs • 2 Baths



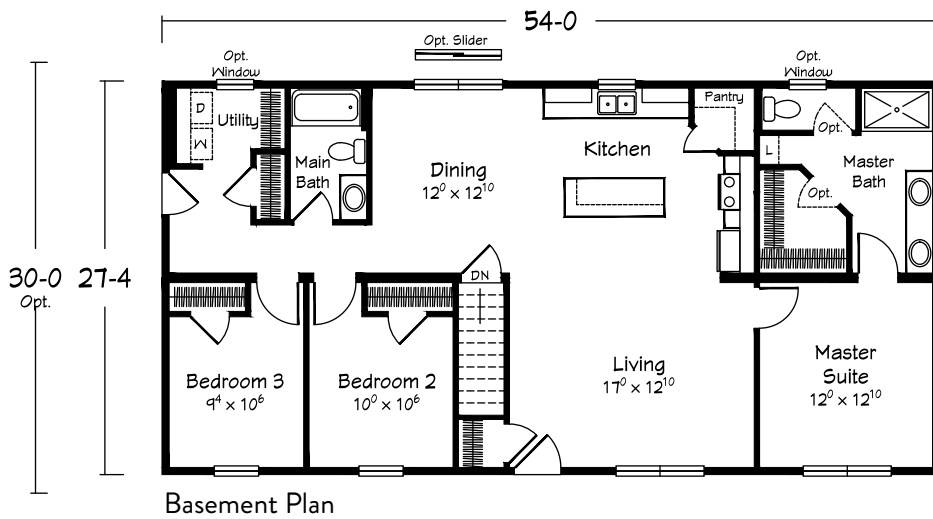
Total "sq. ft." does not include garage or porch square footage.

RANCH



Scan for interior views

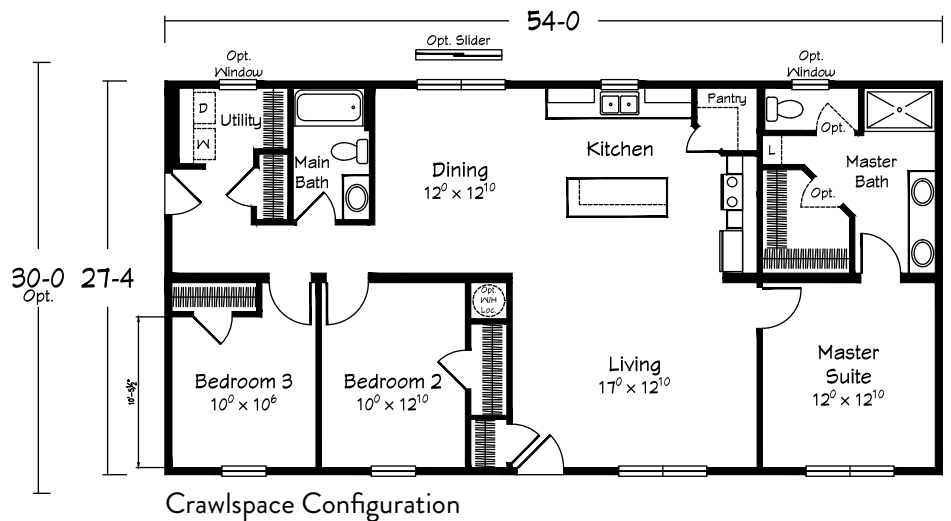
Shown with site built porch and garage.



PIONEER II RANCH

1476-1620 sq. ft.

• 3 BRs • 2 Baths



Total "sq. ft." does not include garage or porch square footage.

RANCH



Shown with site built porch.

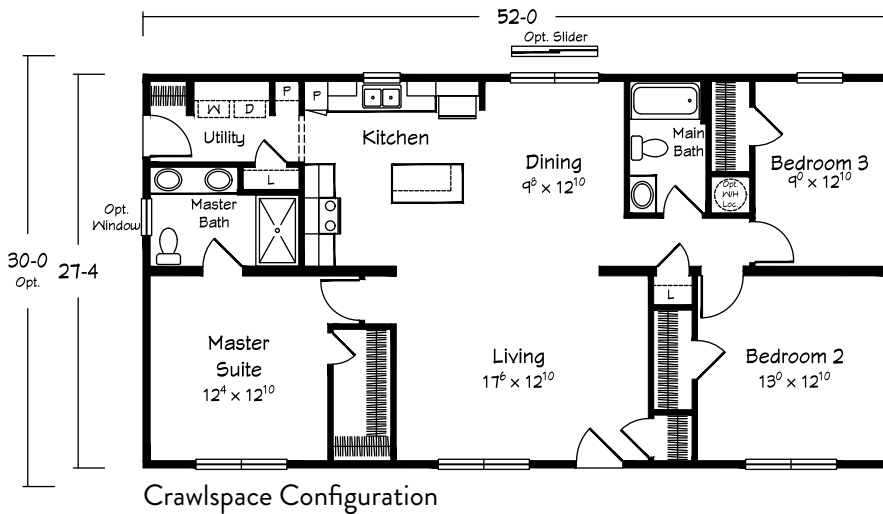
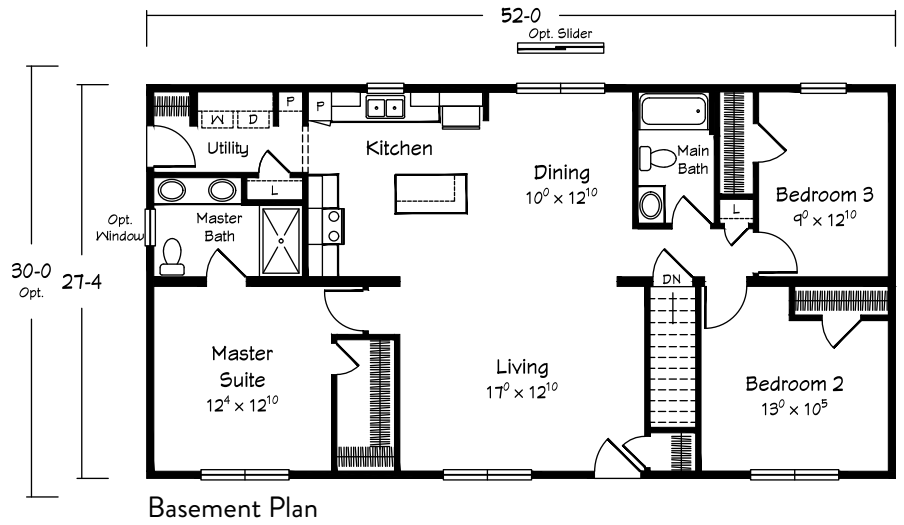
Scan for
interior views



EVERLY RANCH

1421-1560 sq. ft.

• 3 BRs • 2 Baths



Total "sq. ft." does not include garage or porch square footage.

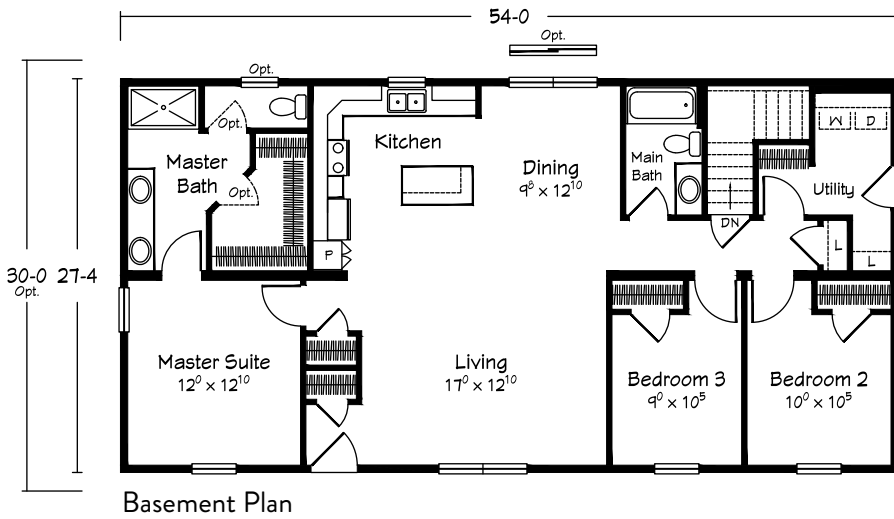
RANCH



Shown with site built porch.



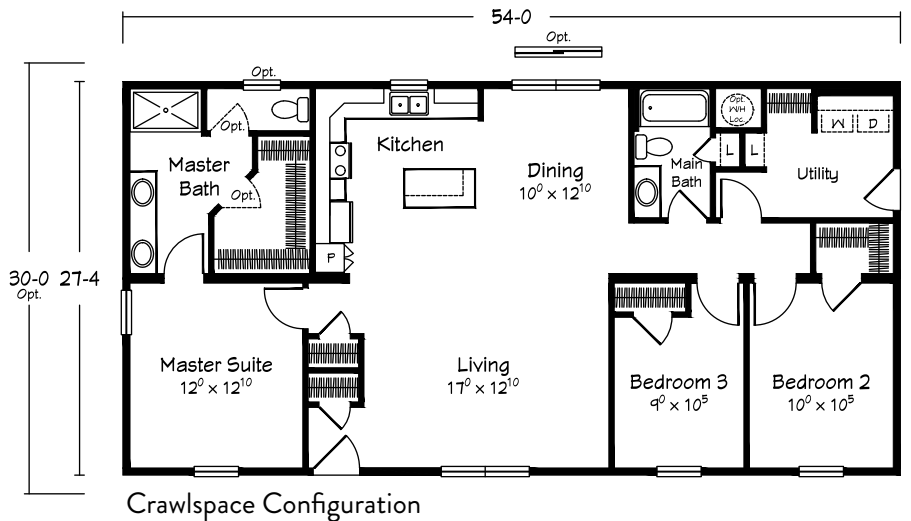
Scan for interior views



GREENFIELD III RANCH

1476-1616 sq. ft.

• 3 BRs • 2 Baths



Total "sq. ft." does not include garage or porch square footage.

RANCH



Shown with saddle roof/porch option.

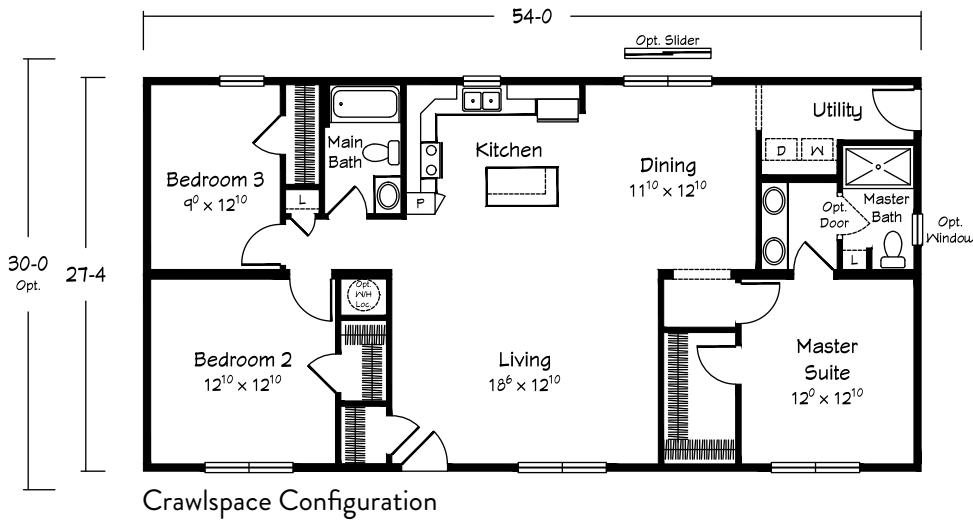
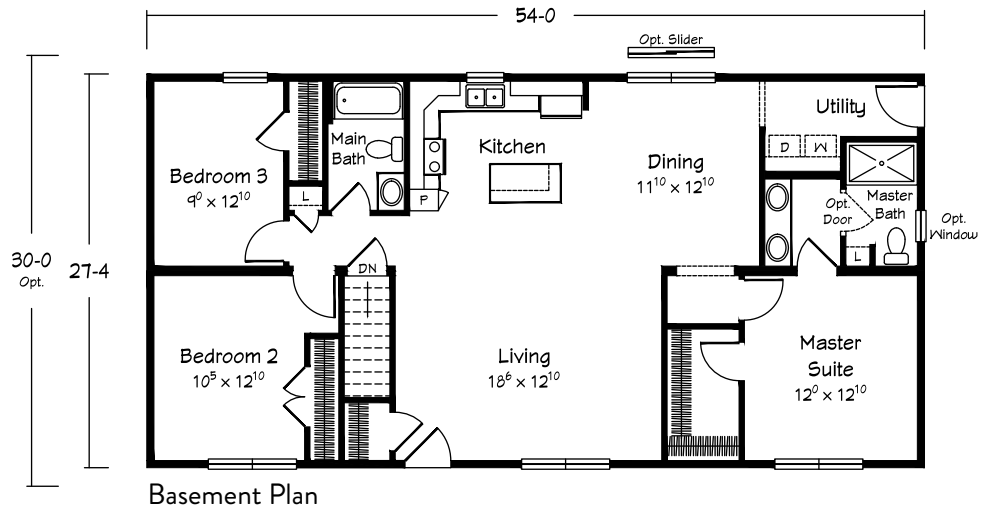
Scan for
interior views



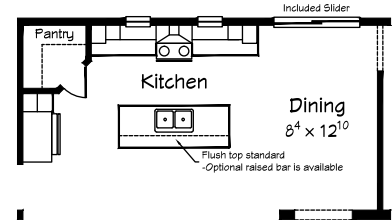
SHELBYVILLE RANCH

1476-1620 sq. ft.

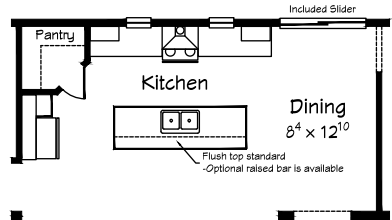
• 3 BRs • 2 Baths



Optional Easy Living Kitchen 1 (ELK 1)



Optional Easy Living Kitchen 2 (ELK 2)



* Optional Easy Living Kitchen can be ordered as "ELK I" or "ELK II"– refer to photos on Page 1 of this brochure for cabinetry and window differences. Review your home's final plan prints for cabinet/window call-outs and adjusted room dimensions with these options.

Total "sq. ft." does not include garage or porch square footage.

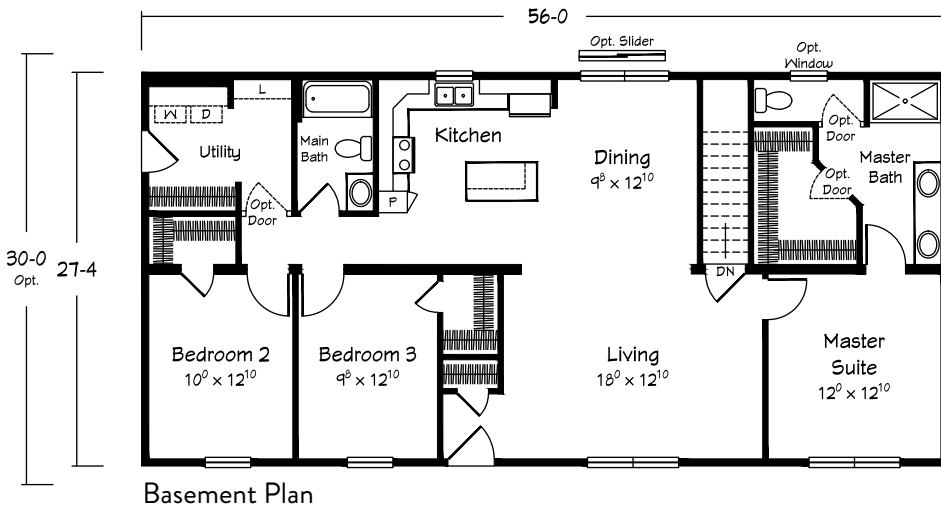
RANCH



Shown with site built porch.

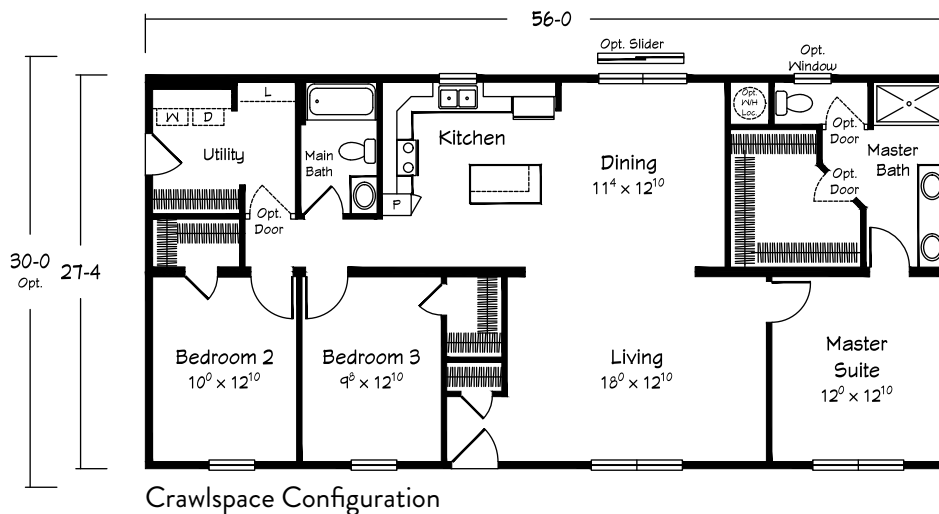


Scan for
interior views

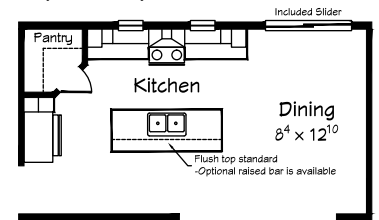


ELMIRA RANCH

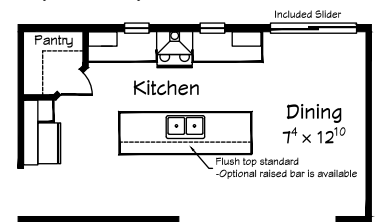
1530-1680 sq. ft.
3 BRs • 2 Baths



Optional Easy Living Kitchen 1 (ELK 1)



Optional Easy Living Kitchen 2 (ELK 2)



* Optional Easy Living Kitchen can be ordered as "ELK I" or "ELK II" - refer to photos on Page 1 of this brochure for cabinetry and window differences. Review your home's final plan prints for cabinet/window call-outs and adjusted room dimensions with these options.

Total "sq. ft." does not include garage or porch square footage.

RANCH



Shown with site built porch and garage.

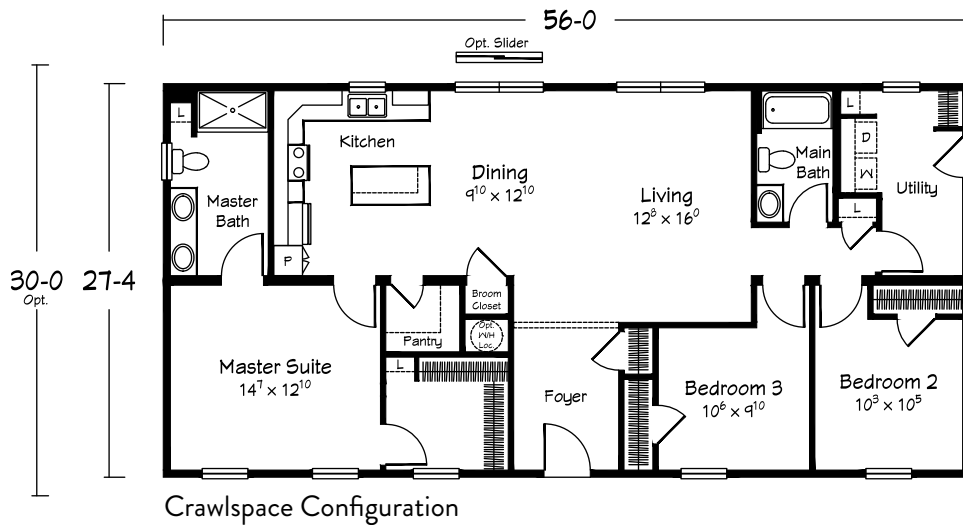
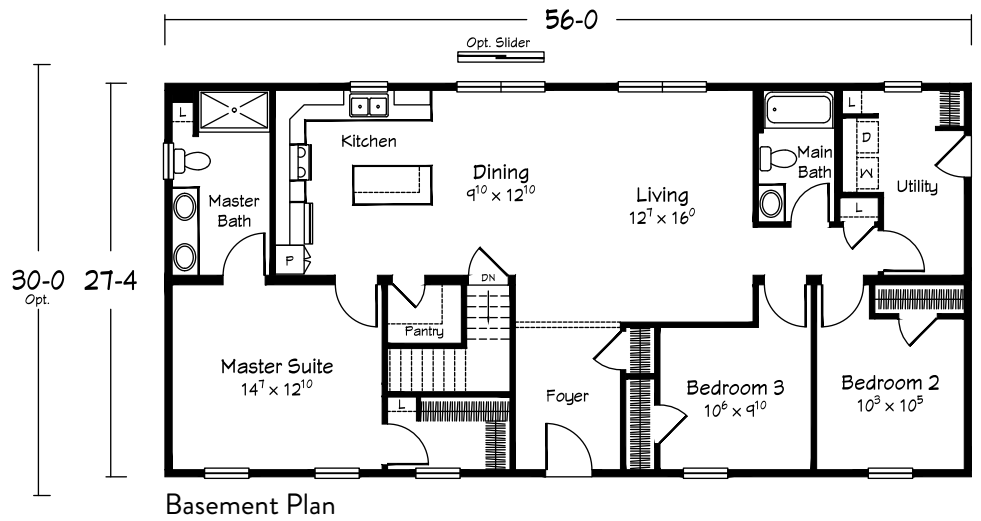
Scan for
interior views



ALTON RANCH

1530-1680 sq. ft.

- 3 BRs • 2 Baths



Total "sq. ft." does not include garage or porch square footage.

RANCH



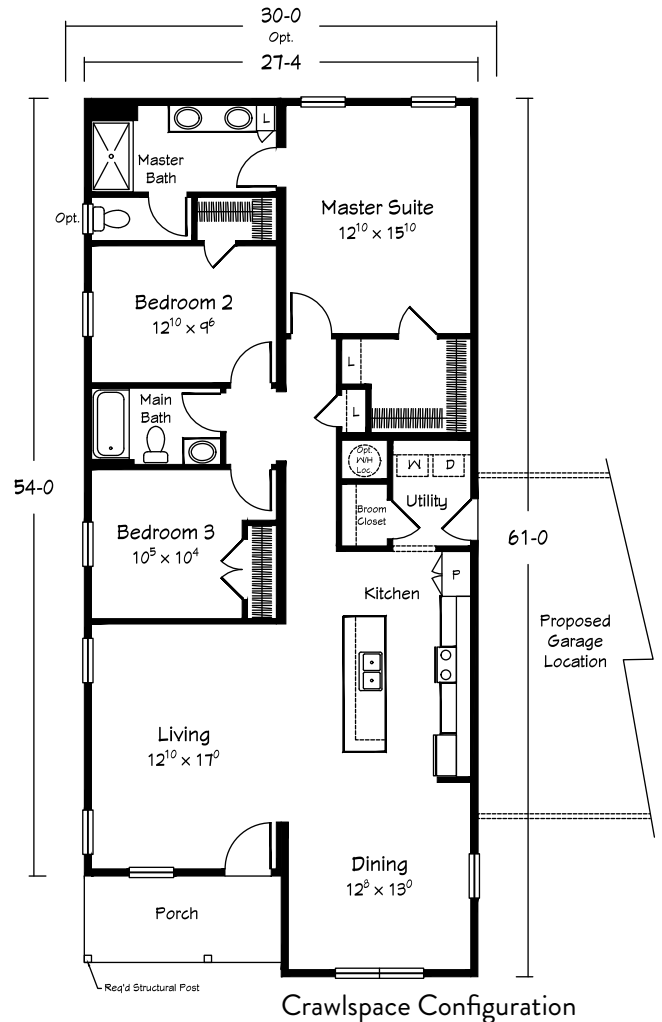
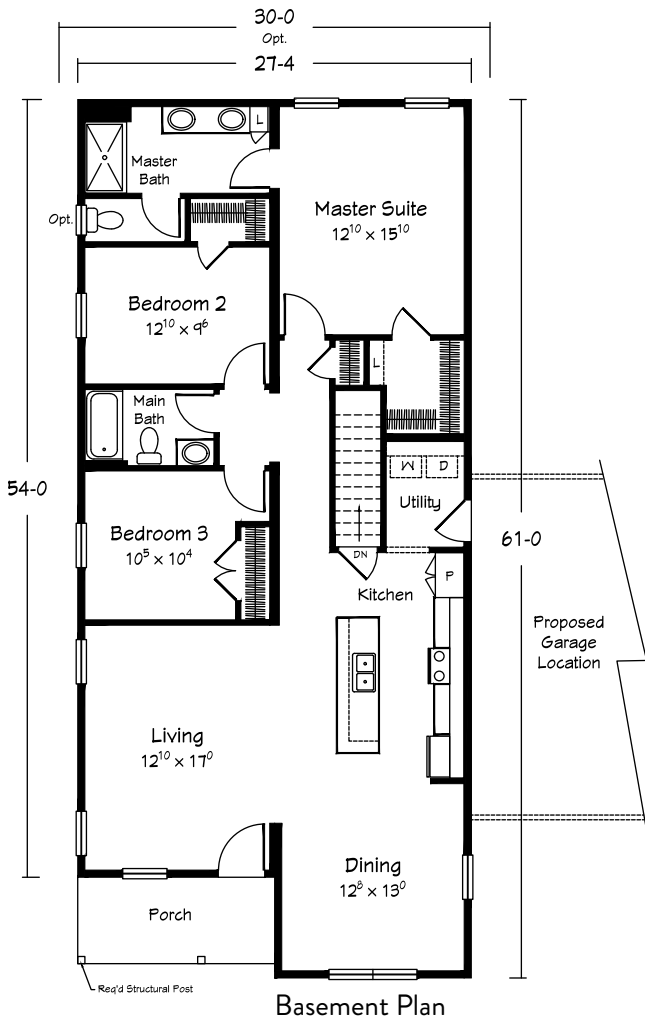
Scan for
interior views

Shown with site built garage and site completed porch.

CALABASH II RANCH

1572-1725 sq. ft.

• 3 BRs • 2 Baths



Total "sq. ft." does not include garage or porch square footage.

RANCH



Shown with site built porch.

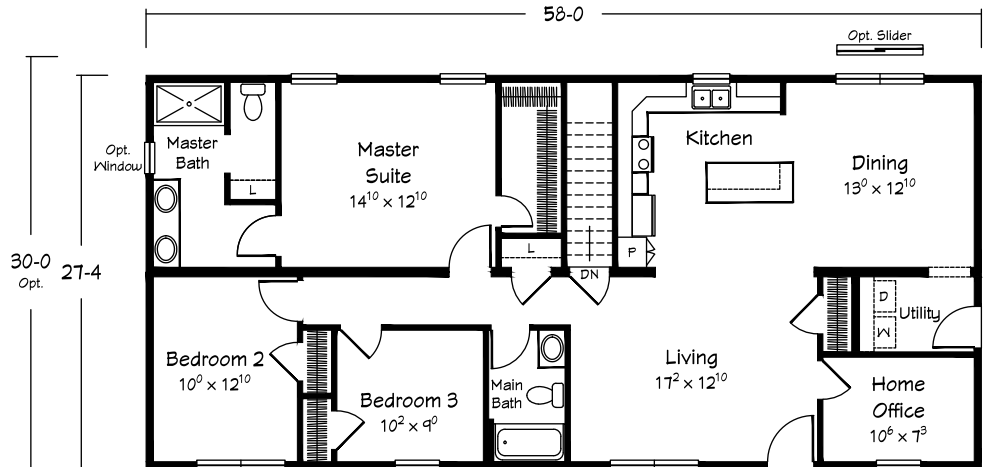
Scan for
interior views



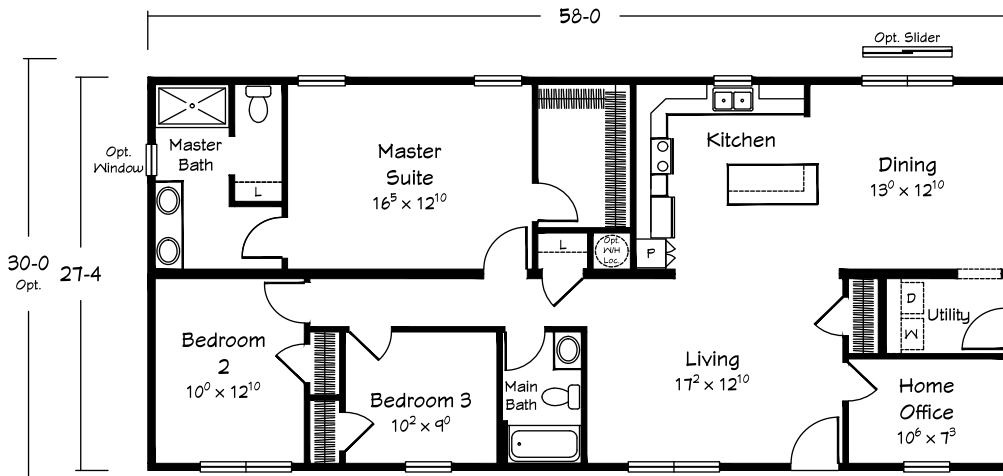
ELLENBORO RANCH

1585-1740 sq. ft.

3 BRs • 2 Baths • Home Office

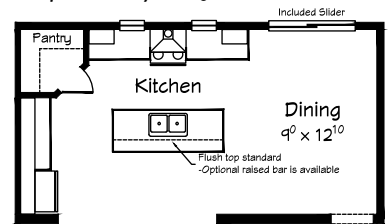


Basement Plan

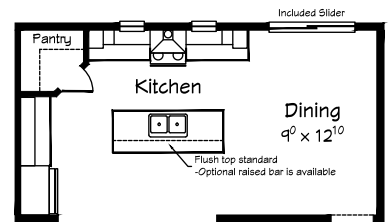


Crawlspace Configuration

Optional Easy Living Kitchen 1 (ELK 1)



Optional Easy Living Kitchen 2 (ELK 2)



* Optional Easy Living Kitchen can be ordered as "ELK I" or "ELK II"– refer to photos on Page 1 of this brochure for cabinetry and window differences. Review your home's final plan prints for cabinet/window call-outs and adjusted room dimensions with these options.

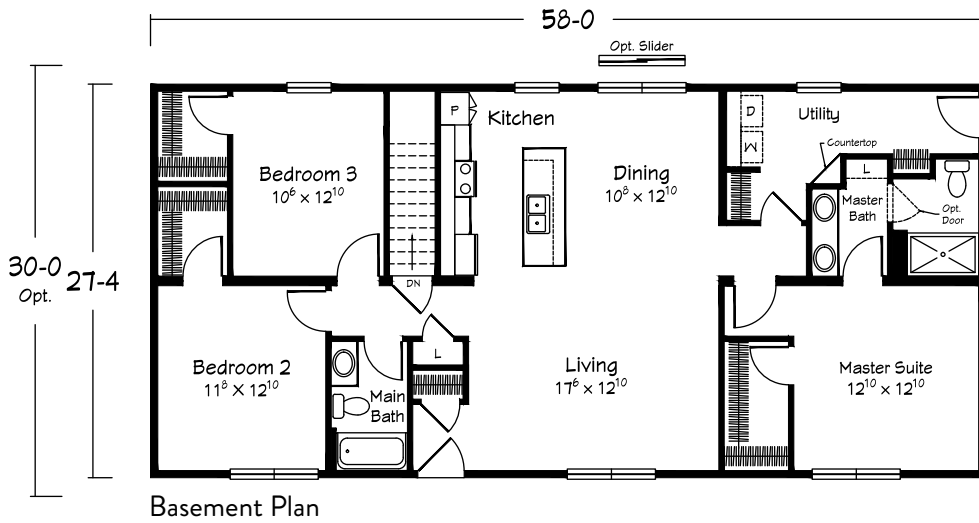
Total "sq. ft." does not include garage or porch square footage.

RANCH



Scan for
interior views

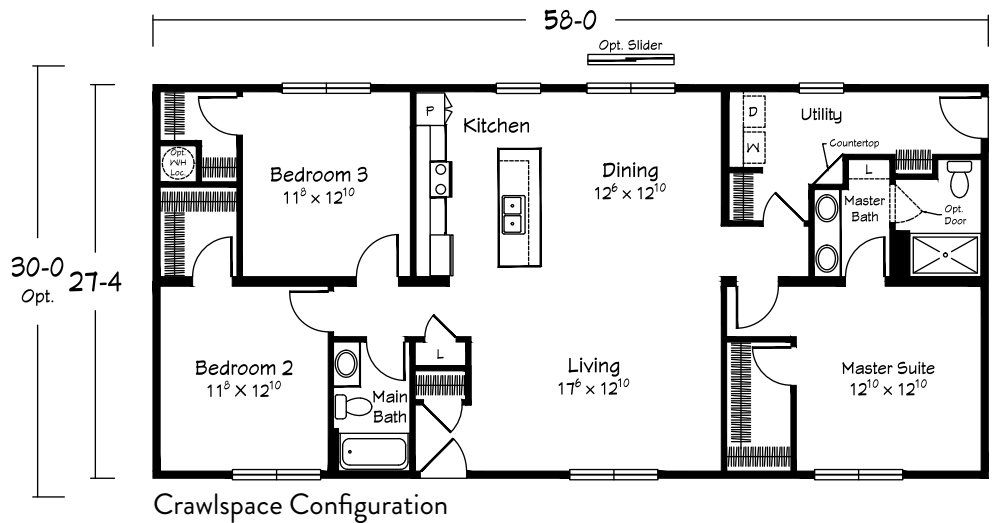
Shown with site built porch and garage.



STEEPLECHASE RANCH

1585-1740 sq. ft.

• 3 BRs • 2 Baths



Total "sq. ft." does not include garage or porch square footage.

RANCH



Shown with site built porch.

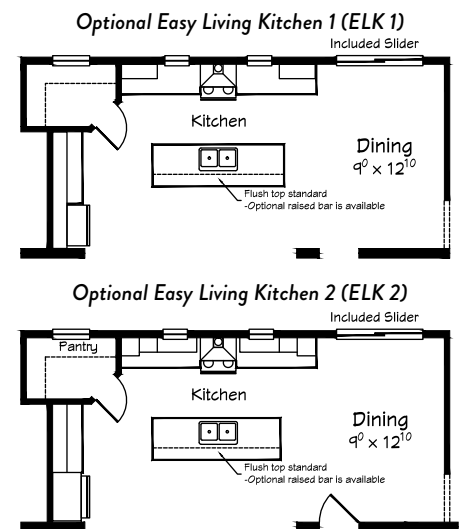
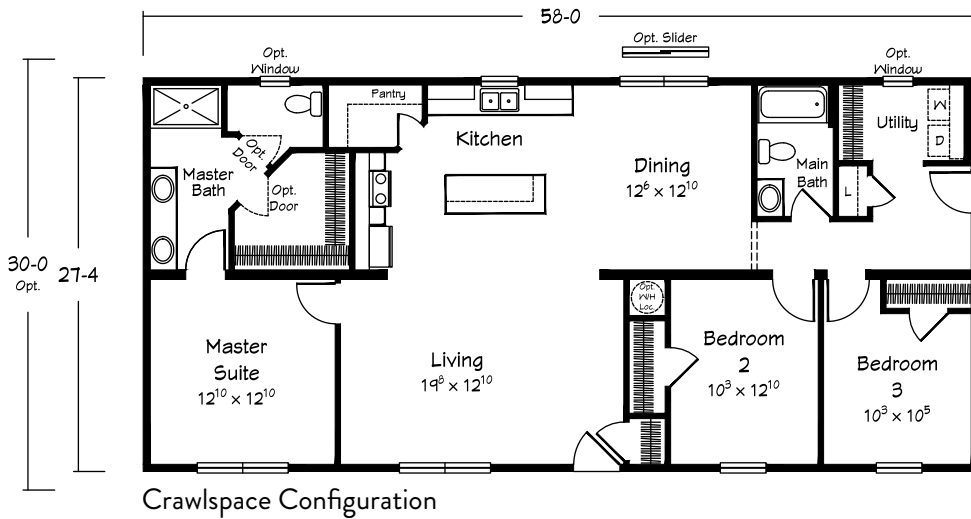
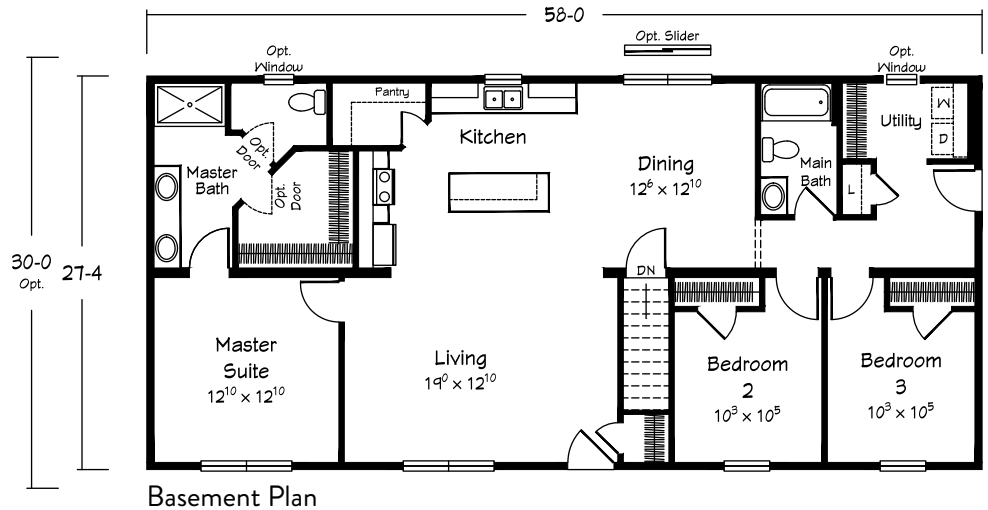
Scan for
interior views



EASY STREET RANCH

1585-1740 sq. ft.

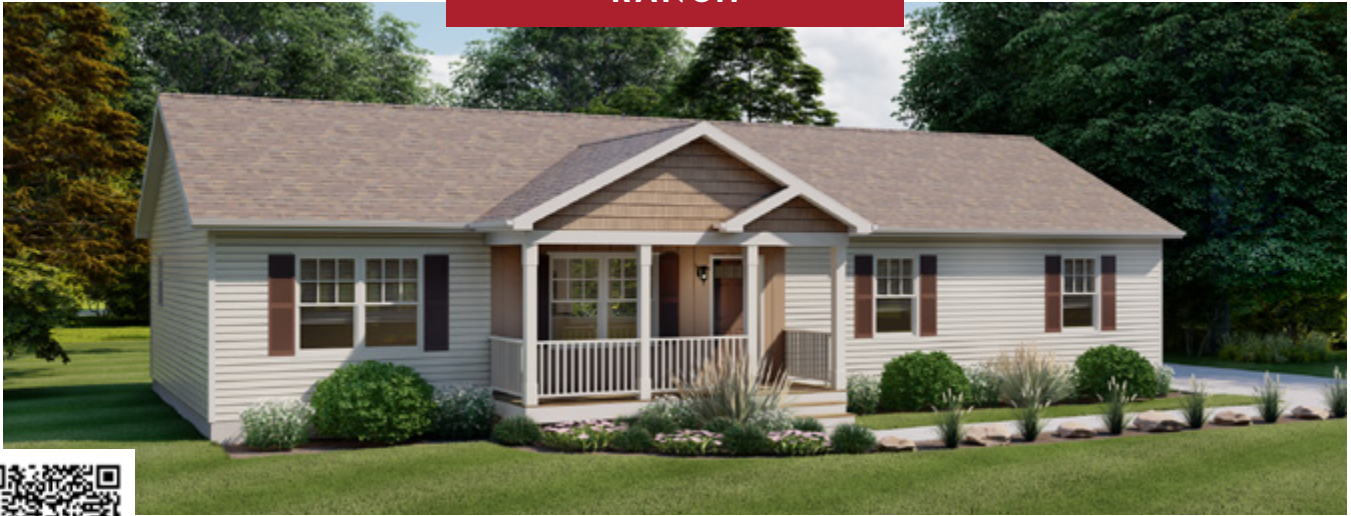
• 3 BRs • 2 Baths



* Optional Easy Living Kitchen can be ordered as "ELK I" or "ELK II"– refer to photos on Page 1 of this brochure for cabinetry and window differences. Review your home's final plan prints for cabinet/window call-outs and adjusted room dimensions with these options.

Total "sq. ft." does not include garage or porch square footage.

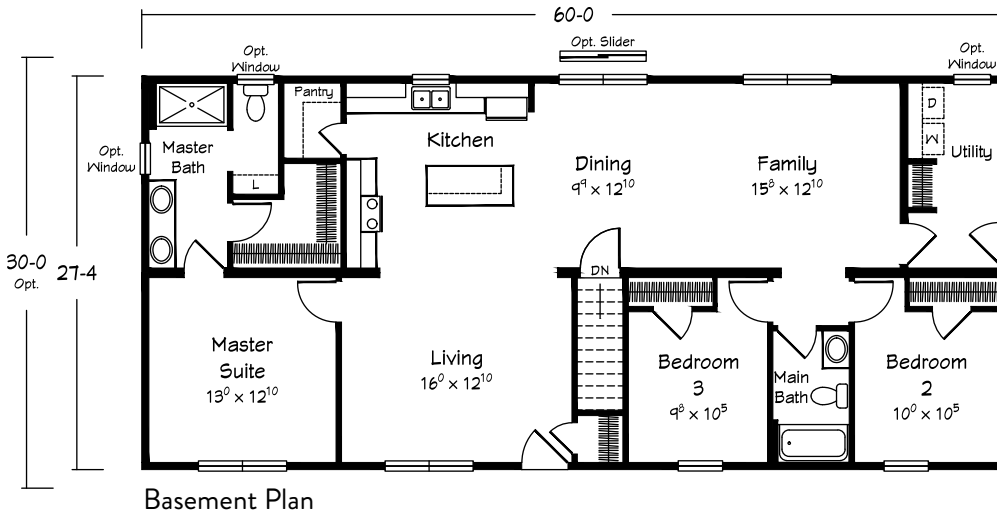
RANCH



Shown with site built porch.



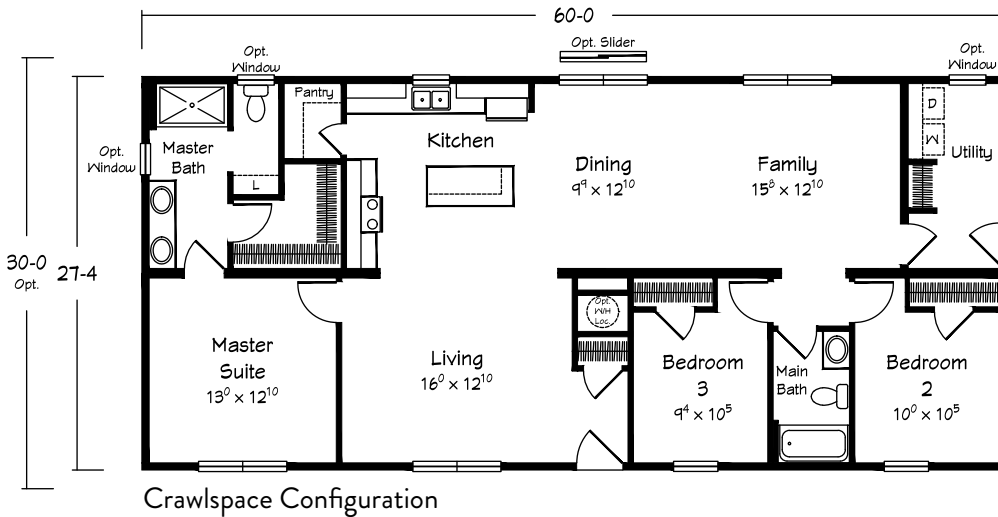
Scan for
interior views



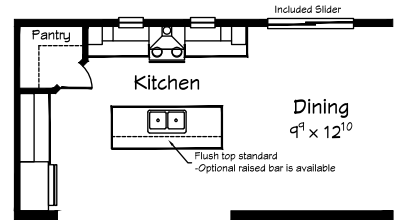
ERWIN RANCH

1640-1800 sq. ft.

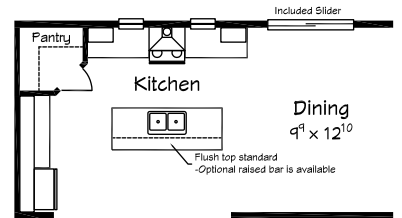
- 3 BRs • 2 Baths
- Family Room



Optional Easy Living Kitchen 1 (ELK 1)



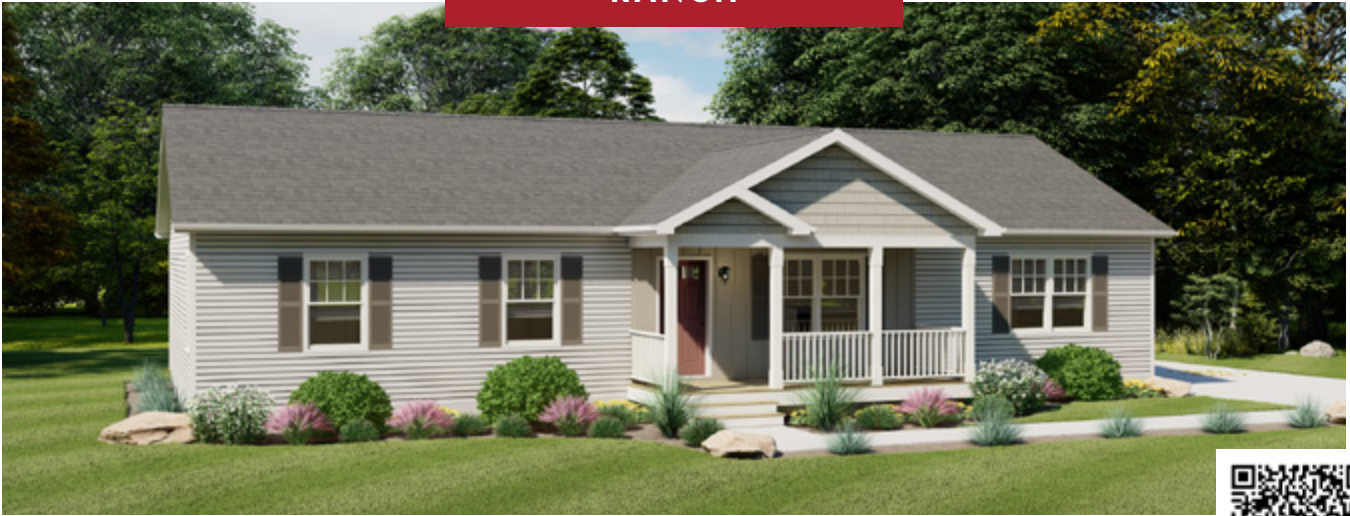
Optional Easy Living Kitchen 2 (ELK 2)



* Optional Easy Living Kitchen can be ordered as "ELK I" or "ELK II" - refer to photos on Page 1 of this brochure for cabinetry and window differences. Review your home's final plan prints for cabinet/window call-outs and adjusted room dimensions with these options.

Total "sq. ft." does not include garage or porch square footage.

RANCH



Shown with site built porch.

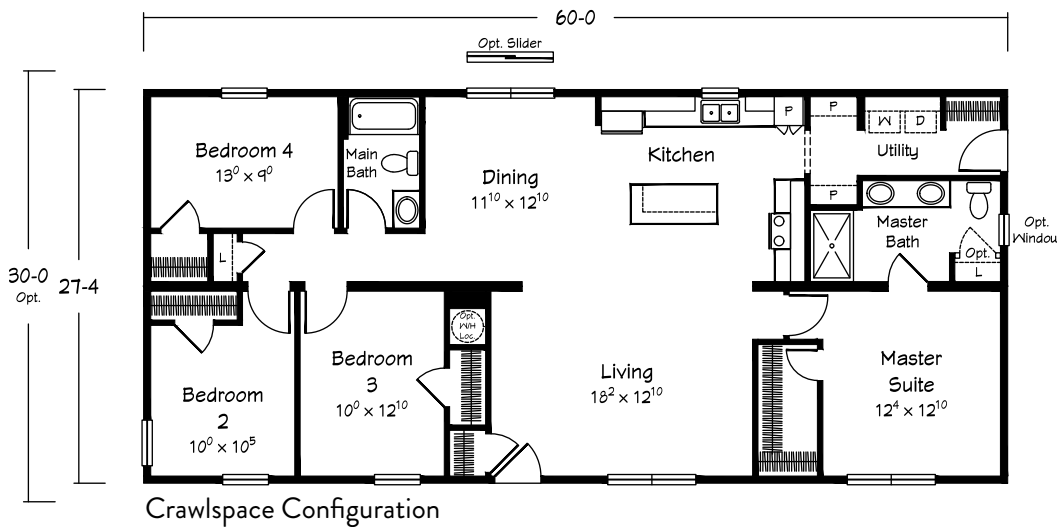
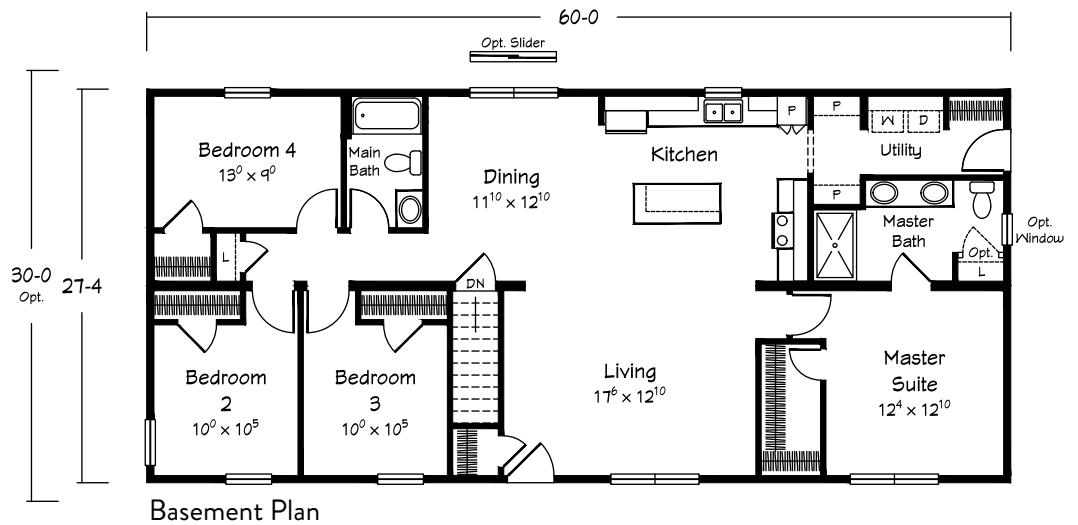
Scan for
interior views



ESSEX RANCH

1640-1800 sq. ft.

- 4 BRs • 2 Baths



Total "sq. ft." does not include garage or porch square footage.

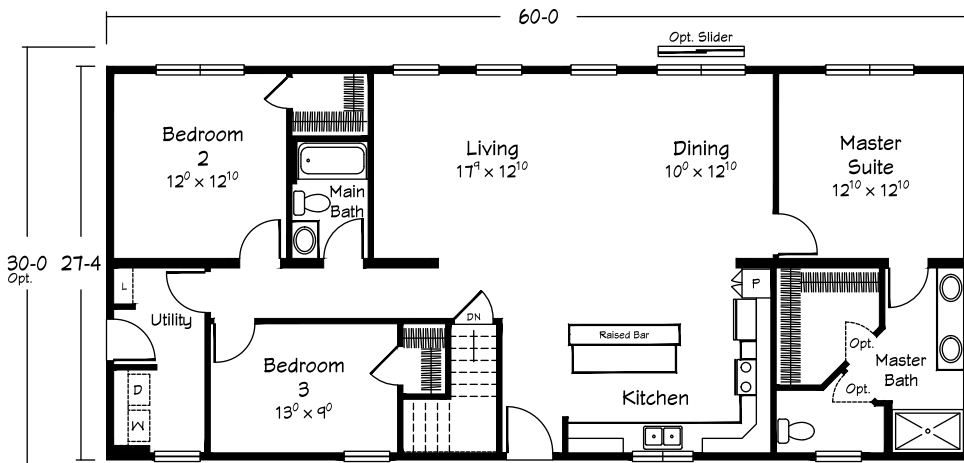
RANCH



Shown with site built garage and saddle roof/porch option.



Scan for
interior views

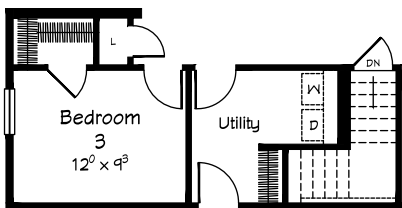


Basement Plan

ELBERTA RANCH

1640-1800 sq. ft.

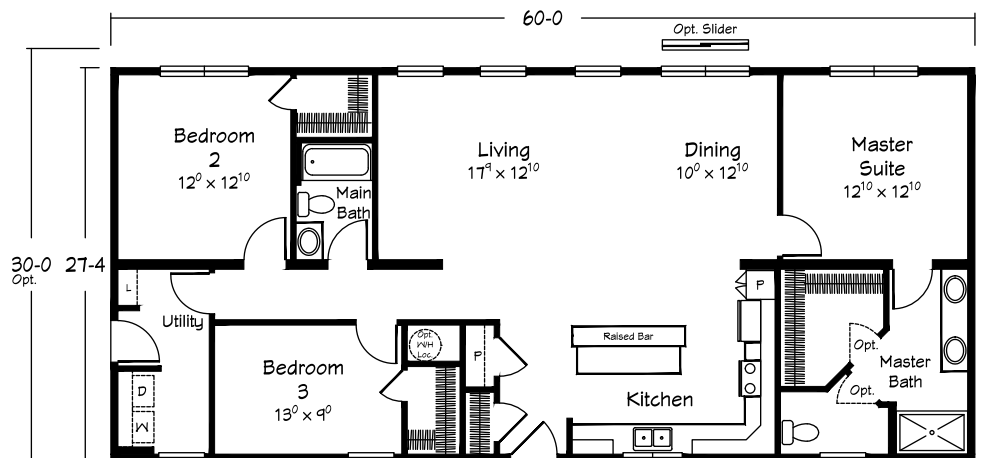
• 3 BRs • 2 Baths



Proposed Site-Built
Garage Location



Opt. Front Garage Plan



Crawlspace Configuration

Total "sq. ft." does not include garage or porch square footage.

RANCH



Shown with saddle roof/porch option.

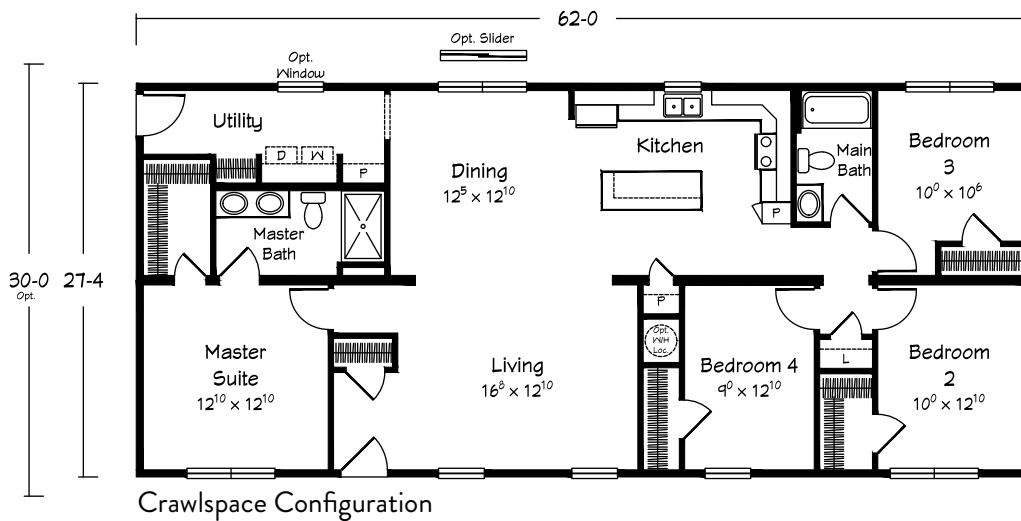
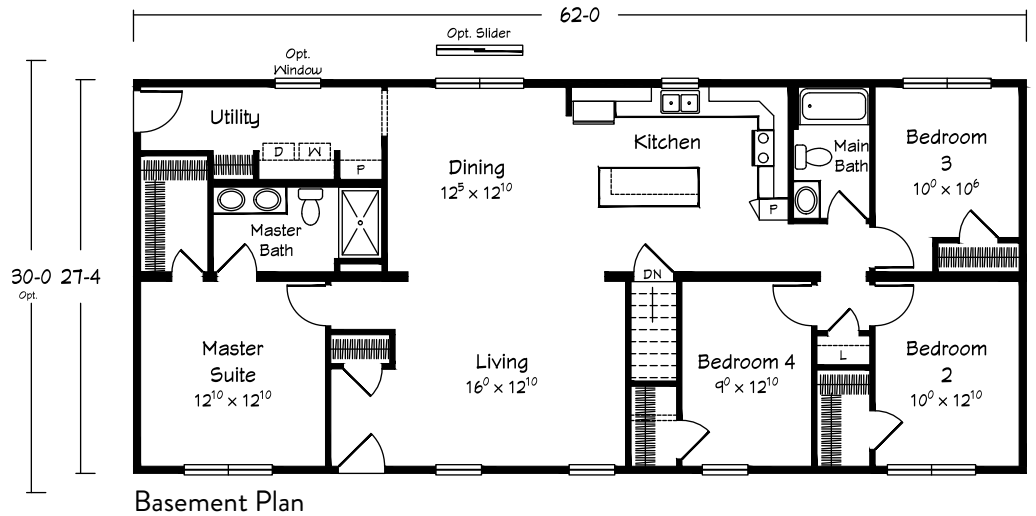
Scan for
interior views



STILLWATER RANCH

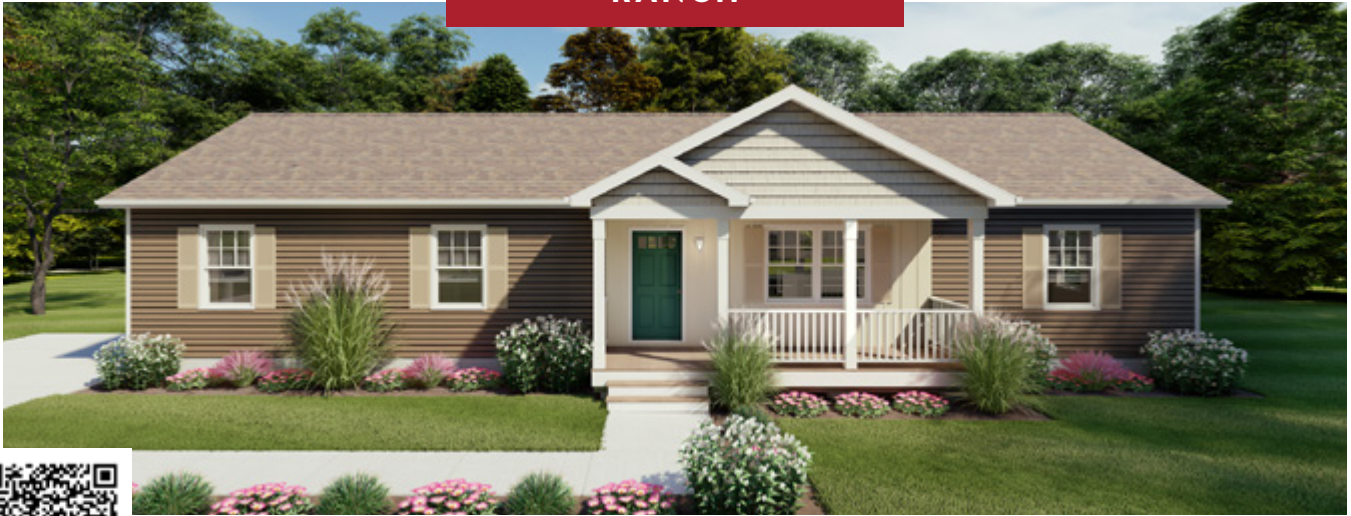
1695-1860 sq. ft.

- 4 BRs • 2 Baths



Total "sq. ft." does not include garage or porch square footage.

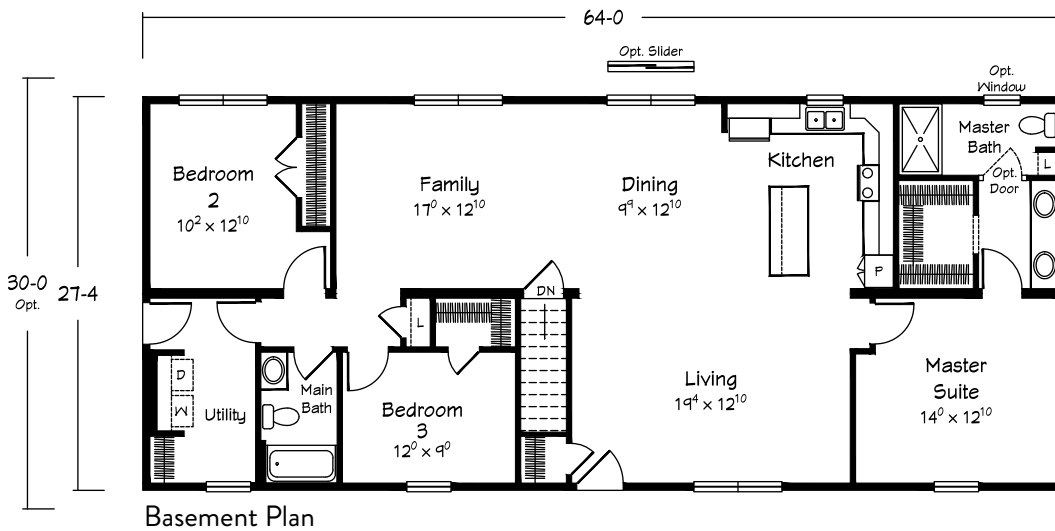
RANCH



Shown with site built porch.



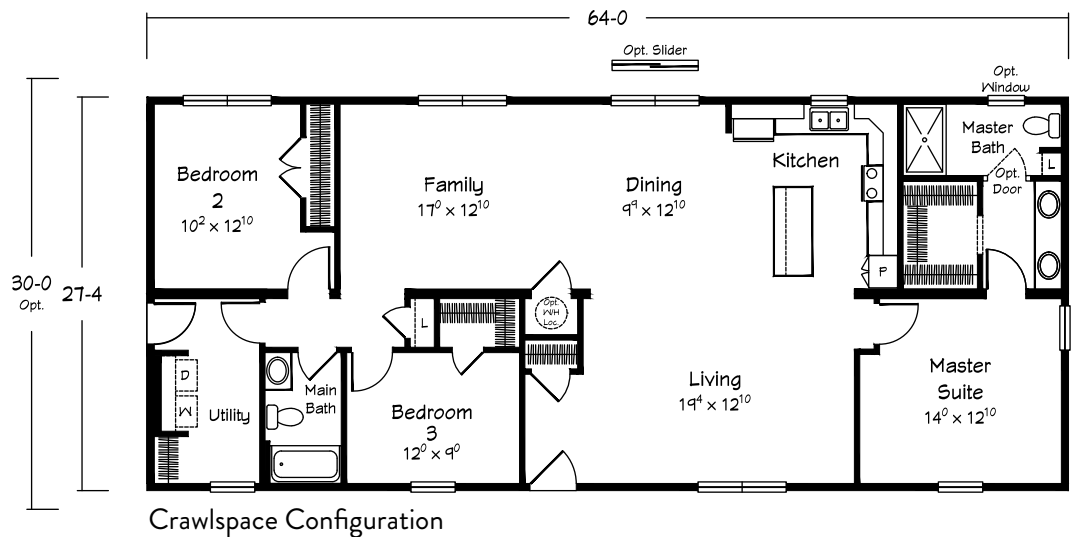
Scan for
interior views



EAGLETON RANCH

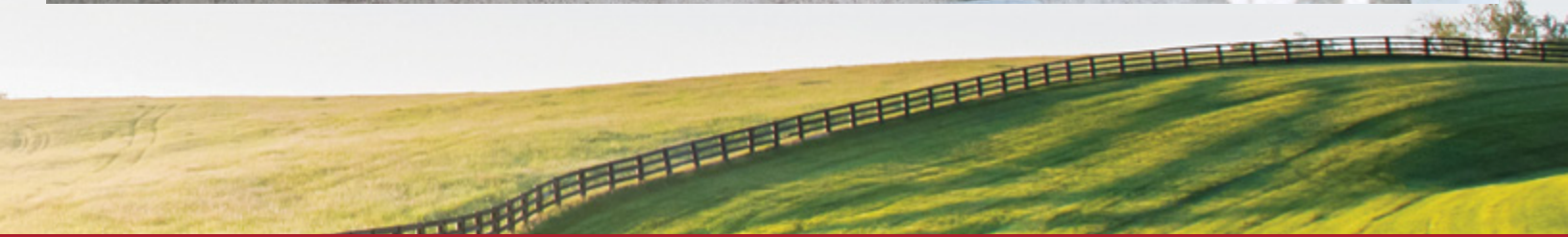
1749-1920 sq. ft.

- 3 BRs • 2 Baths
- Family Room



Total "sq. ft." does not include garage or porch square footage.







Your approved
Ritz-Craft
Homebuilder:



Approved homebuilders are independent business entities and are not agents of Ritz-Craft Corporation.

Due to occasional updating of building codes and Ritz-Craft's continuous product improvement, specifications are subject to change without prior notification.

Be sure to request a copy of Homestead Series specifications from your selected homebuilder.

Floorplans and renderings are ©2024 Ritz-Craft Corporation. 0724